

Product datasheet for **TA364489S**

IL6 Rabbit Polyclonal Antibody

Product data:

| | |
|-------------------------|------------------------------------------------------------------------------------------------------------------------------------------------------------------------------|
| Product Type: | Primary Antibodies |
| Applications: | IHC, WB |
| Recommended Dilution: | WB: 500-2000 WB positive control: 231, Raji, Jurkat, K562, HUVEC cell lysates IHC: 50-100 Positive control: Human liver cancer Predicted cell location: Secreted |
| Reactivity: | Human |
| Host: | Rabbit |
| Isotype: | IgG |
| Clonality: | Polyclonal |
| Immunogen: | Fusion protein of human IL6 |
| Formulation: | pH7.4 PBS, 0.05% NaN ₃ , 40% Glycerol |
| Purification: | Antigen affinity purification |
| Conjugation: | Unconjugated |
| Storage: | Store at -20°C. |
| Stability: | 1 year |
| Predicted Protein Size: | 24 kDa |
| Gene Name: | interleukin 6 |
| Database Link: | Entrez Gene 3569 Human P05231 |



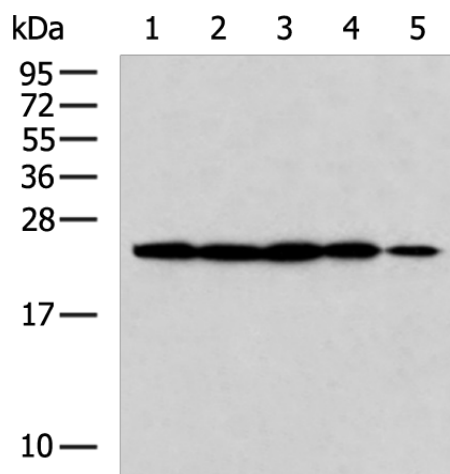
[View online »](#)

Background:

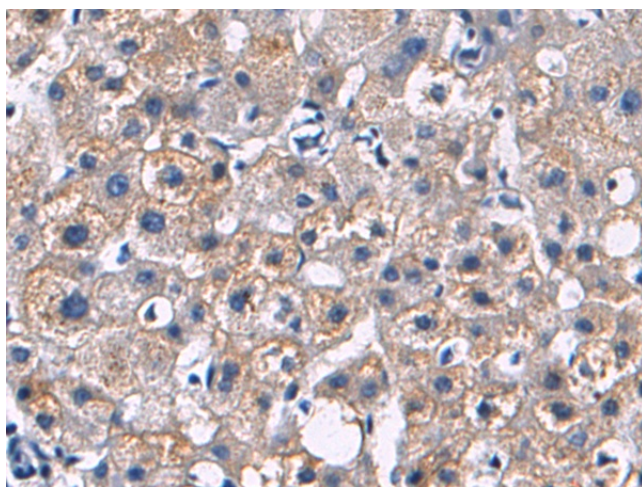
This gene encodes a cytokine that functions in inflammation and the maturation of B cells. In addition, the encoded protein has been shown to be an endogenous pyrogen capable of inducing fever in people with autoimmune diseases or infections. The protein is primarily produced at sites of acute and chronic inflammation, where it is secreted into the serum and induces a transcriptional inflammatory response through interleukin 6 receptor, alpha. The functioning of this gene is implicated in a wide variety of inflammation-associated disease states, including susceptibility to diabetes mellitus and systemic juvenile rheumatoid arthritis. Elevated levels of the encoded protein have been found in virus infections, including COVID-19 (disease caused by SARS-CoV-2).

Synonyms:

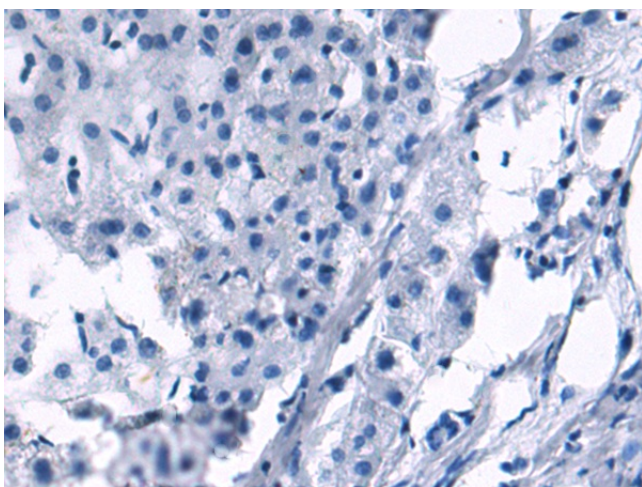
BSF-2; BSF2; CDF; HGF; HSF; IFNB2; IL-6; OTTHUMP00000158544

Product images:


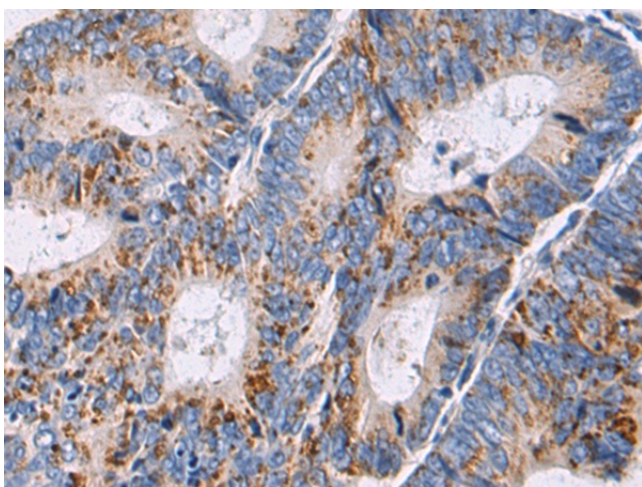
Gel: 12%SDS-PAGE
 Lysate: 40 µg
 Lane 1-5: 231
 Raji
 Jurkat
 K562
 HUVEC cell lysates
 Primary antibody: [TA364489] (IL6 Antibody) at dilution 1/400
 Secondary antibody: Goat anti rabbit IgG at 1/5000 dilution
 Exposure time: 20 seconds



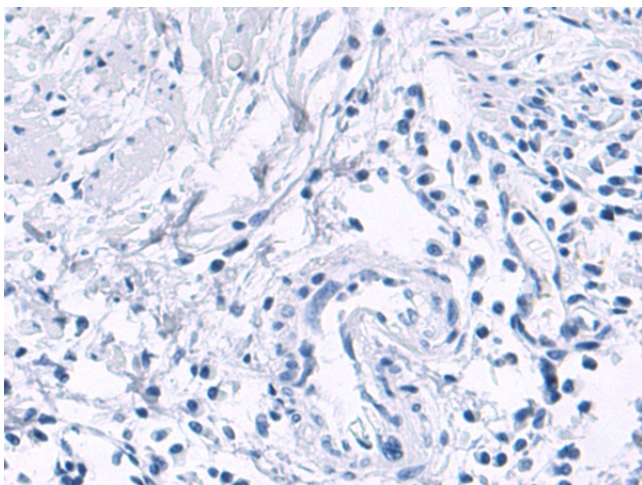
Immunohistochemistry of paraffin-embedded Human liver cancer tissue using [TA364489] (IL6 Antibody) at dilution 1/50 (Original magnification: ×200)



Immunohistochemistry of paraffin-embedded Human liver cancer tissue using [TA364489] (IL6 Antibody) at dilution 1/50, treated with fusion protein. (Original magnification: x200)



Immunohistochemistry of paraffin-embedded Human colorectal cancer tissue using [TA364489] (IL6 Antibody) at dilution 1/50 (Original magnification: x200)



Immunohistochemistry of paraffin-embedded Human colorectal cancer tissue using [TA364489] (IL6 Antibody) at dilution 1/50, treated with fusion protein. (Original magnification: x200)