

## Product datasheet for **TA364483**

### IMP3 (IGF2BP3) Rabbit Polyclonal Antibody

#### Product data:

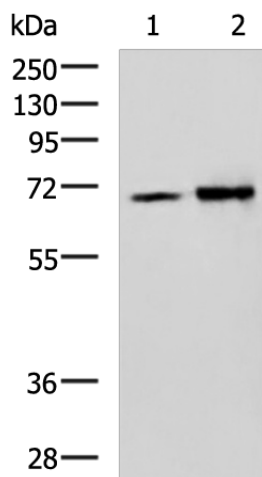
Product Type:	Primary Antibodies
Applications:	IHC, WB
Recommended Dilution:	WB: 500-2000 WB positive control: Jurkat and K562 cell lysates IHC: 100-200 Positive control: Human colorectal cancer Predicted cell location: Nucleus
Reactivity:	Human, Mouse
Host:	Rabbit
Isotype:	IgG
Clonality:	Polyclonal
Immunogen:	Fusion protein of human IGF2BP3
Formulation:	pH7.4 PBS, 0.05% NaN <sub>3</sub> , 40% Glycerol
Concentration:	lot specific
Purification:	Antigen affinity purification
Conjugation:	Unconjugated
Storage:	Store at -20°C.
Stability:	1 year
Predicted Protein Size:	64 kDa
Gene Name:	insulin like growth factor 2 mRNA binding protein 3
Database Link:	<a href="#">Entrez Gene 10643 Human</a> <a href="#">O00425</a>
Background:	The protein encoded by this gene is primarily found in the nucleolus, where it can bind to the 5' UTR of the insulin-like growth factor II leader 3 mRNA and may repress translation of insulin-like growth factor II during late development. The encoded protein contains several KH domains, which are important in RNA binding and are known to be involved in RNA synthesis and metabolism. A pseudogene exists on chromosome 7, and there are putative pseudogenes on other chromosomes.



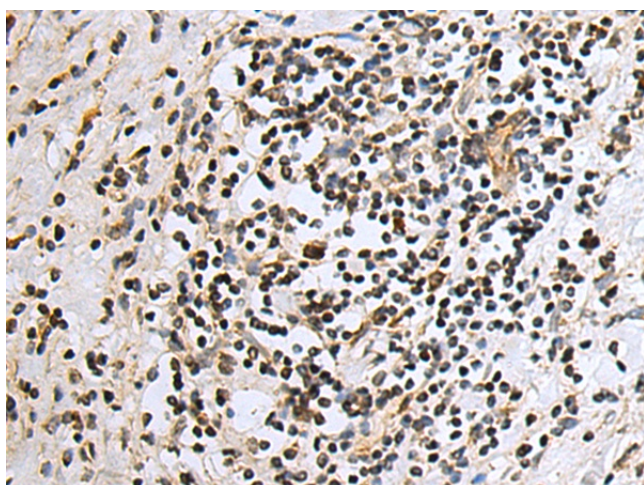
[View online »](#)

Synonyms: CT98; DKFZp686F1078; hKOC; IMP-3; IMP3; KOC1; VICKZ3

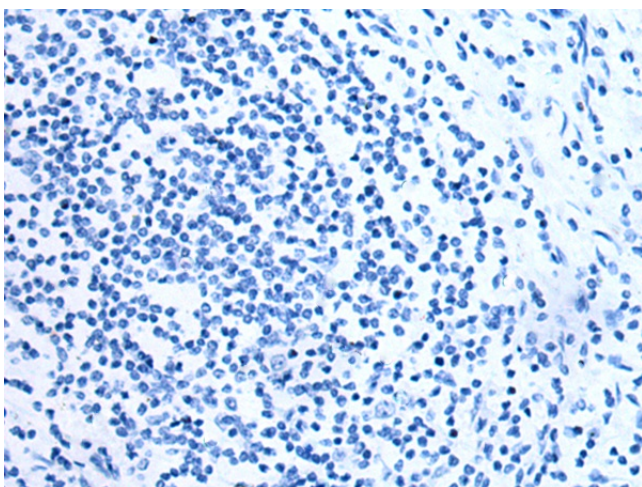
**Product images:**



Gel: 8%SDS-PAGE  
 Lysate: 40 µg  
 Lane 1-2: Jurkat and K562 cell lysates  
 Primary antibody: TA364483 (IGF2BP3 Antibody) at dilution 1/700  
 Secondary antibody: Goat anti rabbit IgG at 1/5000 dilution  
 Exposure time: 30 seconds



Immunohistochemistry of paraffin-embedded Human colorectal cancer tissue using TA364483 (IGF2BP3 Antibody) at dilution 1/100 (Original magnification: x200)



Immunohistochemistry of paraffin-embedded Human colorectal cancer tissue using TA364483 (IGF2BP3 Antibody) at dilution 1/100, treated with fusion protein. (Original magnification:  $\times 200$ )