

Product datasheet for **TA364460S**

ERK5 (MAPK7) Rabbit Polyclonal Antibody

Product data:

Product Type:	Primary Antibodies
Applications:	IHC, WB
Recommended Dilution:	WB: 200-1000 WB positive control: Human fetal muscle tissue IHC: 25-100 Positive control: Human liver cancer Predicted cell location: Cytoplasm
Reactivity:	Human, Mouse, Rat
Host:	Rabbit
Isotype:	IgG
Clonality:	Polyclonal
Immunogen:	Fusion protein of human MAPK7
Formulation:	pH7.4 PBS, 0.05% NaN ₃ , 40% Glycerol
Purification:	Antigen affinity purification
Conjugation:	Unconjugated
Storage:	Store at -20°C.
Stability:	1 year
Predicted Protein Size:	88 kDa
Gene Name:	mitogen-activated protein kinase 7
Database Link:	Entrez Gene 5598 Human Q13164

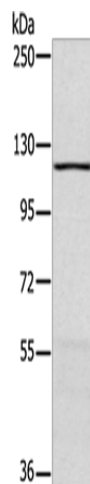
Background: The protein encoded by this gene is a member of the MAP kinase family. MAP kinases act as an integration point for multiple biochemical signals, and are involved in a wide variety of cellular processes such as proliferation, differentiation, transcription regulation and development. This kinase is specifically activated by mitogen-activated protein kinase kinase 5 (MAP2K5/MEK5). It is involved in the downstream signaling processes of various receptor molecules including receptor type kinases, and G protein-coupled receptors.

Synonyms: BMK1; ERK-5; ERK4; ERK5; PRKM7

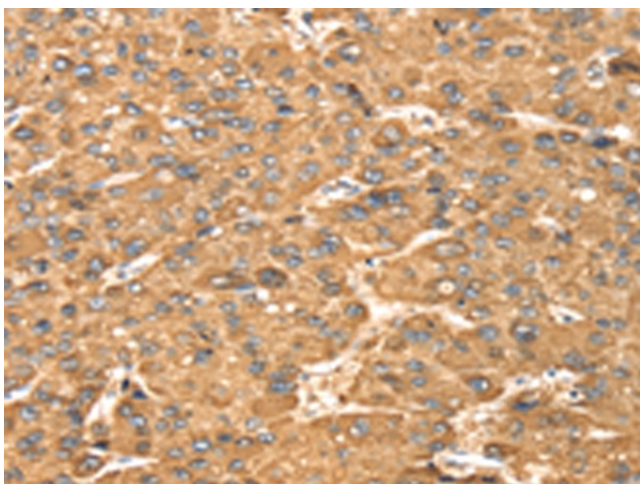


[View online »](#)

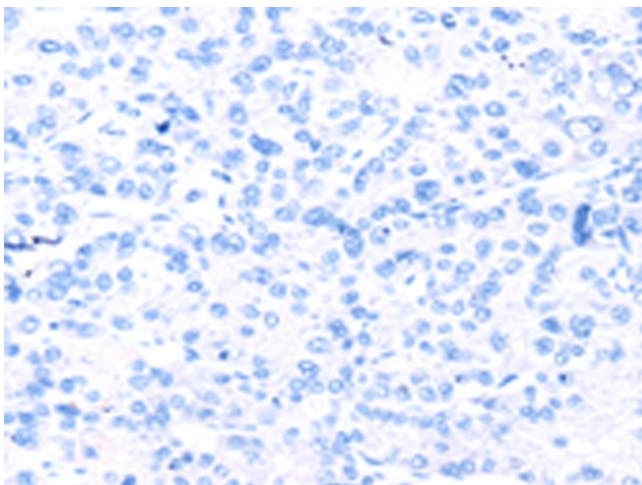
Product images:



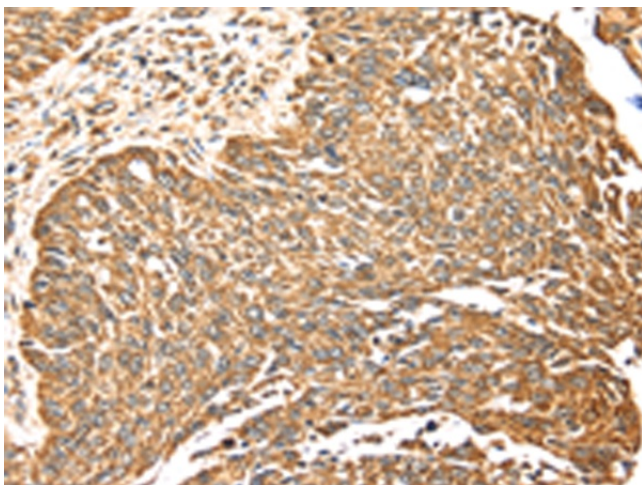
Gel: 6%SDS-PAGE
Lysate: 40 μ g
Lane: Human fetal muscle tissue
Primary antibody: [TA364460] (MAPK7 Antibody)
at dilution 1/250
Secondary antibody: Goat anti rabbit IgG at
1/8000 dilution
Exposure time: 40 seconds



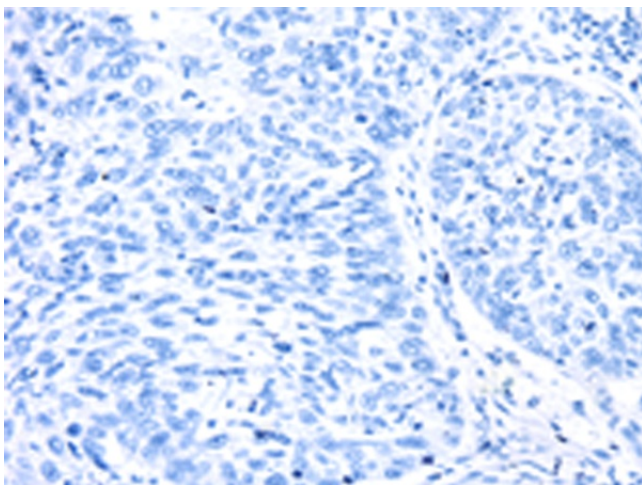
Immunohistochemistry of paraffin-embedded
Human liver cancer tissue using [TA364460]
(MAPK7 Antibody) at dilution 1/20 (Original
magnification: \times 200)



Immunohistochemistry of paraffin-embedded Human liver cancer tissue using [TA364460] (MAPK7 Antibody) at dilution 1/20, treated with fusion protein. (Original magnification: $\times 200$)



Immunohistochemistry of paraffin-embedded Human lung cancer tissue using [TA364460] (MAPK7 Antibody) at dilution 1/20 (Original magnification: $\times 200$)



Immunohistochemistry of paraffin-embedded Human lung cancer tissue using [TA364460] (MAPK7 Antibody) at dilution 1/20, treated with fusion protein. (Original magnification: $\times 200$)