

## Product datasheet for **TA364442S**

### COX4NB (EMC8) Rabbit Polyclonal Antibody

#### Product data:

Product Type:	Primary Antibodies
Applications:	IHC, WB
Recommended Dilution:	WB: 500-2000 WB positive control: A549, Hela and HT-29 cells IHC: 50-200 Positive control: Human liver cancer Predicted cell location: Cytoplasm
Reactivity:	Human, Mouse, Rat
Host:	Rabbit
Isotype:	IgG
Clonality:	Polyclonal
Immunogen:	Fusion protein of human EMC8
Formulation:	pH7.4 PBS, 0.05% NaN <sub>3</sub> , 40% Glycerol
Purification:	Antigen affinity purification
Conjugation:	Unconjugated
Storage:	Store at -20°C.
Stability:	1 year
Predicted Protein Size:	24 kDa
Gene Name:	ER membrane protein complex subunit 8
Database Link:	<a href="#">Entrez Gene 10328 Human O43402</a>



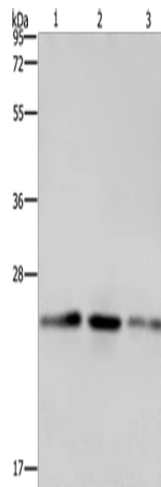
[View online »](#)

**Background:**

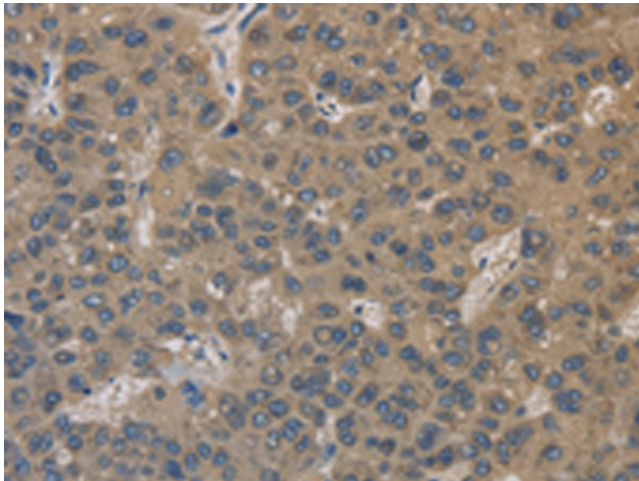
COX4NB (Neighbor of COX4) is a 210 amino acid protein encoded by the human gene COX4NB. COX4NB belongs to the UPF0172 (NOC4) family and is found on chromosome 16, adjacent to the gene that encodes COX4. The GAN gene is located on chromosome 16 and, with mutation, may lead to giant axonal neuropathy, a nervous system disorder characterized by increasing malfunction with growth. The rare disorder Rubinstein-Taybi syndrome is also associated with chromosome 16 through the CREBBP gene which encodes a critical CREB binding protein. Crohn's disease is a gastrointestinal inflammatory condition associated with chromosome 16 through the NOD2 gene. An association with systemic lupus erythematosus and a number of other auto-immune disorders with the pericentromeric region of chromosome 16 has led to the identification of SLC5A11 as a potential autoimmune modifier.

**Synonyms:**

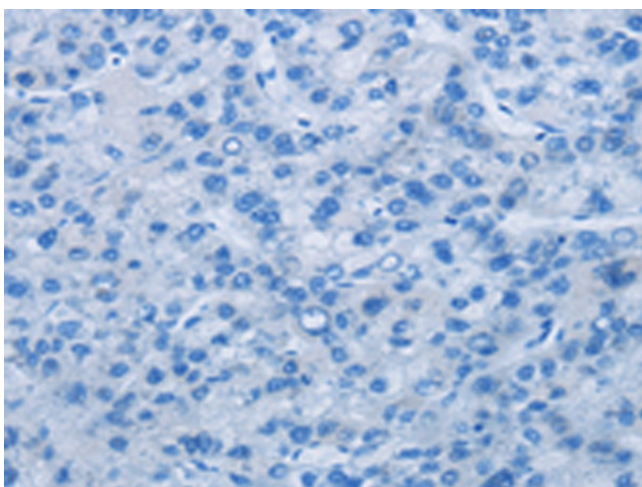
Cox4nb; Fam158b; Noc4

**Product images:**


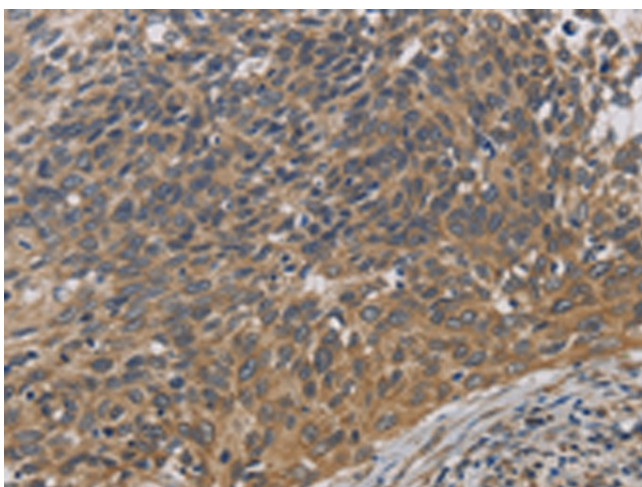
Gel: 10%SDS-PAGE  
 Lysate: 40 µg  
 Lane 1-3: A549 cells  
 HeLa cells  
 HT29 cells  
 Primary antibody: [TA364442] (EMC8 Antibody) at dilution 1/600  
 Secondary antibody: Goat anti rabbit IgG at 1/8000 dilution  
 Exposure time: 1 minute



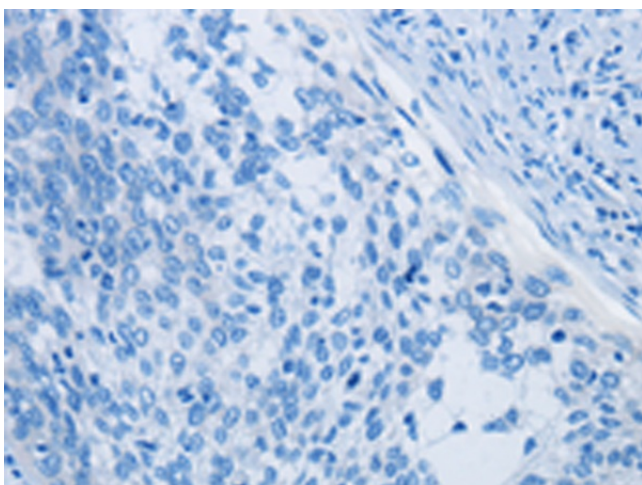
Immunohistochemistry of paraffin-embedded Human liver cancer tissue using [TA364442] (EMC8 Antibody) at dilution 1/30 (Original magnification: ×200)



Immunohistochemistry of paraffin-embedded Human liver cancer tissue using [TA364442] (EMC8 Antibody) at dilution 1/30, treated with fusion protein. (Original magnification: x200)



Immunohistochemistry of paraffin-embedded Human cervical cancer tissue using [TA364442] (EMC8 Antibody) at dilution 1/30 (Original magnification: x200)



Immunohistochemistry of paraffin-embedded Human cervical cancer tissue using [TA364442] (EMC8 Antibody) at dilution 1/30, treated with fusion protein. (Original magnification: x200)