

## Product datasheet for **TA364436S**

### CDK4 Rabbit Polyclonal Antibody

#### Product data:

Product Type:	Primary Antibodies
Applications:	IHC, WB
Recommended Dilution:	WB: 500-2000 WB positive control: Hela cell lysate IHC: 50-300 Positive control: Human esophagus cancer Predicted cell location: Nucleus and Cytoplasm
Reactivity:	Human, Mouse, Rat
Host:	Rabbit
Isotype:	IgG
Clonality:	Polyclonal
Immunogen:	Fusion protein of human CDK4
Formulation:	pH7.4 PBS, 0.05% NaN <sub>3</sub> , 40% Glycerol
Purification:	Antigen affinity purification
Conjugation:	Unconjugated
Storage:	Store at -20°C.
Stability:	1 year
Predicted Protein Size:	34 kDa
Gene Name:	cyclin-dependent kinase 4
Database Link:	<a href="#">Entrez Gene 1019 Human P11802</a>



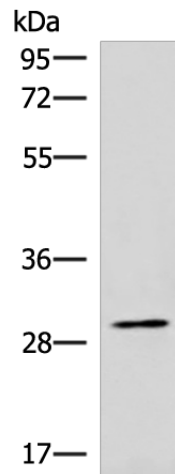
[View online »](#)

**Background:**

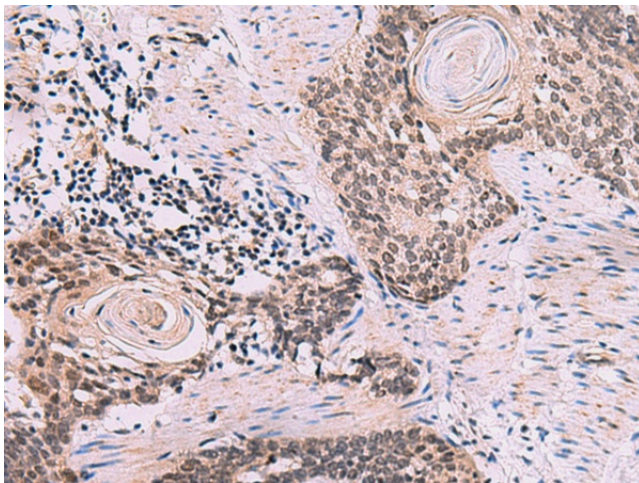
The protein encoded by this gene is a member of the Ser/Thr protein kinase family. This protein is highly similar to the gene products of *S. cerevisiae* cdc28 and *S. pombe* cdc2. It is a catalytic subunit of the protein kinase complex that is important for cell cycle G1 phase progression. The activity of this kinase is restricted to the G1-S phase, which is controlled by the regulatory subunits D-type cyclins and CDK inhibitor p16(INK4a). This kinase was shown to be responsible for the phosphorylation of retinoblastoma gene product (Rb). Mutations in this gene as well as in its related proteins including D-type cyclins, p16(INK4a) and Rb were all found to be associated with tumorigenesis of a variety of cancers. Multiple polyadenylation sites of this gene have been reported.

**Synonyms:**

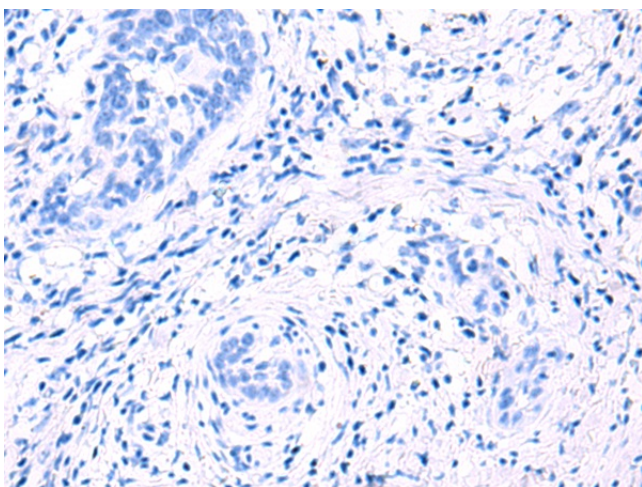
CMM3; MGC14458; PSK-J3

**Product images:**

Gel: 6%SDS-PAGE  
Lysate: 20  $\mu$ g  
Lane: Hela cell lysate  
Primary antibody: [TA364436] (CDK4 Antibody) at dilution 1/1000  
Secondary antibody: Goat anti rabbit IgG at 1/5000 dilution  
Exposure time: 90 seconds



Immunohistochemistry of paraffin-embedded Human esophagus cancer tissue using [TA364436] (CDK4 Antibody) at dilution 1/60 (Original magnification:  $\times$ 200)



Immunohistochemistry of paraffin-embedded Human esophagus cancer tissue using [TA364436] (CDK4 Antibody) at dilution 1/60, treated with fusion protein. (Original magnification:  $\times 200$ )