

## Product datasheet for **TA364433S**

### CBX2 Rabbit Polyclonal Antibody

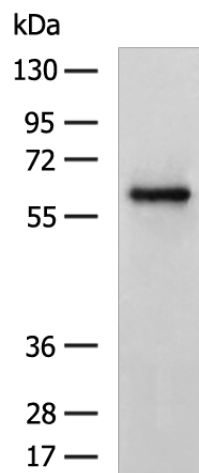
#### Product data:

Product Type:	Primary Antibodies
Applications:	IHC, WB
Recommended Dilution:	WB: 500-2000 WB positive control: A431 cell lysate IHC: 50-100 Positive control: Human gastric cancer Predicted cell location: Nucleus
Reactivity:	Human
Host:	Rabbit
Isotype:	IgG
Clonality:	Polyclonal
Immunogen:	Fusion protein of human CBX2
Formulation:	pH7.4 PBS, 0.05% NaN <sub>3</sub> , 40% Glycerol
Purification:	Antigen affinity purification
Conjugation:	Unconjugated
Storage:	Store at -20°C.
Stability:	1 year
Predicted Protein Size:	56 kDa
Gene Name:	chromobox 2
Database Link:	<a href="#">Entrez Gene 84733 Human Q14781</a>
Background:	This gene encodes a component of the polycomb multiprotein complex, which is required to maintain the transcriptionally repressive state of many genes throughout development via chromatin remodeling and modification of histones. Disruption of this gene in mice results in male-to-female gonadal sex reversal. Mutations in this gene are also associated with gonadal dysgenesis in humans. Alternatively spliced transcript variants encoding different isoforms have been noted for this gene.
Synonyms:	CDCA6; M33; MGC10561

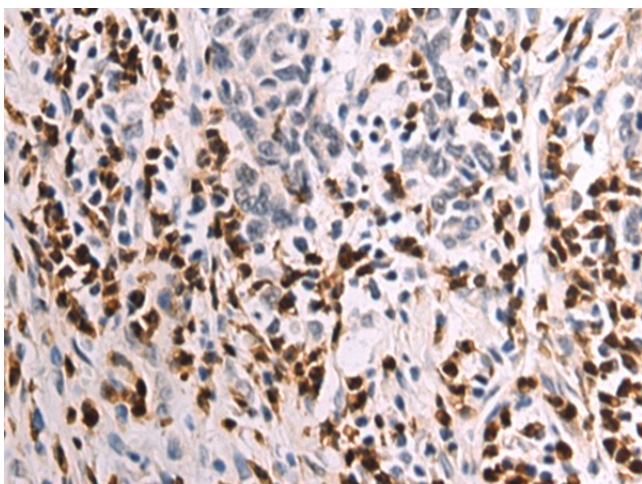


[View online »](#)

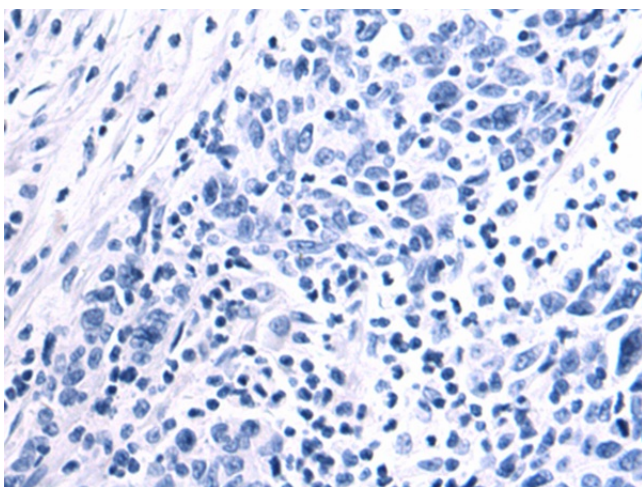
## Product images:



Gel: 8%SDS-PAGE  
Lysate: 40  $\mu$ g  
Lane: A431 cell lysate  
Primary antibody: [TA364433] (CBX2 Antibody) at dilution 1/600  
Secondary antibody: Goat anti rabbit IgG at 1/5000 dilution  
Exposure time: 30 seconds



Immunohistochemistry of paraffin-embedded Human gastric cancer tissue using [TA364433] (CBX2 Antibody) at dilution 1/55 (Original magnification:  $\times$ 200)



Immunohistochemistry of paraffin-embedded Human gastric cancer tissue using [TA364433] (CBX2 Antibody) at dilution 1/55, treated with fusion protein. (Original magnification:  $\times 200$ )