

Product datasheet for **TA364430**

CTNNAL1 Rabbit Polyclonal Antibody

Product data:

Product Type:	Primary Antibodies
Applications:	IHC
Recommended Dilution:	IHC: 30-150 Positive control: Human liver cancer Predicted cell location: Cytoplasm and Cell membrane
Reactivity:	Human, Mouse
Host:	Rabbit
Isotype:	IgG
Clonality:	Polyclonal
Immunogen:	Fusion protein of human CTNNAL1
Formulation:	pH7.4 PBS, 0.05% NaN ₃ , 40% Glycerol
Concentration:	lot specific
Purification:	Antigen affinity purification
Conjugation:	Unconjugated
Storage:	Store at -20°C.
Stability:	1 year
Gene Name:	catenin alpha like 1
Database Link:	Entrez Gene 8727 Human Q9UBT7

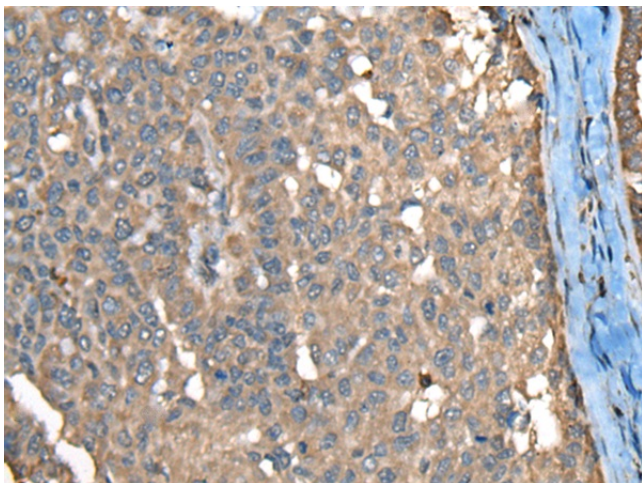
Background: CTNNAL1 (catenin (cadherin-associated protein), alpha-like 1), also known as CLLP or alpha-CATU, is a 734 amino acid cytoplasmic peripheral membrane protein belonging to the vinculin/alpha-catenin family. Expressed at high levels in adrenal gland and present at lower levels in neural tissues, CTNNAL1 may be involved in the regulation of Rho pathway signaling by providing a scaffold for the Lbc Rho guanine nucleotide exchange factor 1 (RhoGEF p115). It is suggested that CTNNAL1 is down-regulated in pancreatic carcinoma undergoing differentiation and apoptosis. Existing as three isoforms produced by alternative splicing events, CTNNAL1 may contribute to the wound repair and proliferation of human bronchial epithelial cells (HBEC).



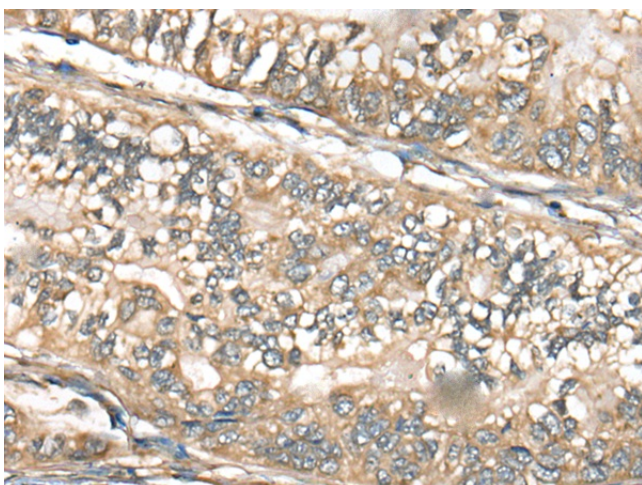
[View online »](#)

Synonyms: ACRP; alpha-CATU; alpha-catulin; alpha2-catulin; CLLP; FLJ08121

Product images:



Immunohistochemistry of paraffin-embedded Human liver cancer tissue using TA364430 (CTNNAL1 Antibody) at dilution 1/30. (Original magnification: $\times 200$)



Immunohistochemistry of paraffin-embedded Human gastric cancer tissue using TA364430 (CTNNAL1 Antibody) at dilution 1/30. (Original magnification: $\times 200$)