

## Product datasheet for **TA364429**

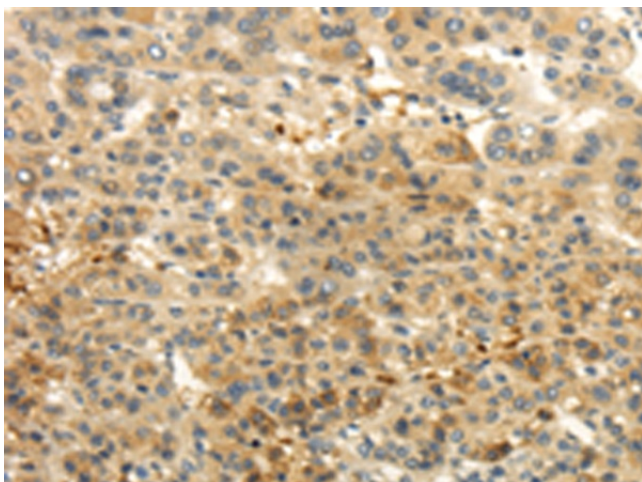
### CaMKI gamma (CAMK1G) Rabbit Polyclonal Antibody

#### Product data:

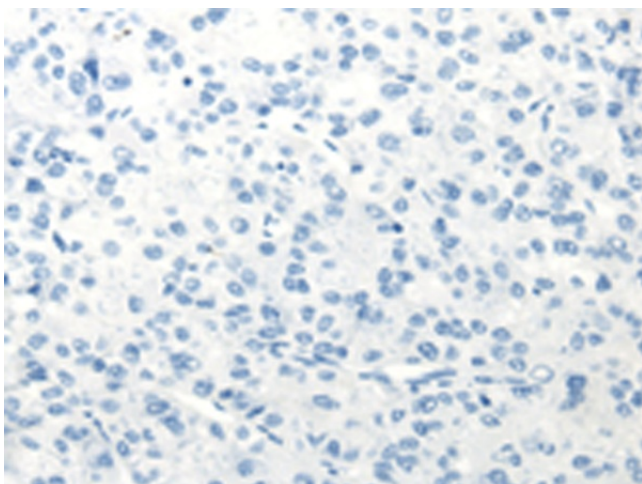
Product Type:	Primary Antibodies
Applications:	IHC
Recommended Dilution:	IHC: 25-100 Positive control: Human liver cancer Predicted cell location: Cytoplasm
Reactivity:	Human, Mouse, Rat
Host:	Rabbit
Isotype:	IgG
Clonality:	Polyclonal
Immunogen:	Fusion protein of human CAMK1G
Formulation:	pH7.4 PBS, 0.05% NaN <sub>3</sub> , 40% Glycerol
Concentration:	lot specific
Purification:	Antigen affinity purification
Conjugation:	Unconjugated
Storage:	Store at -20°C.
Stability:	1 year
Gene Name:	calcium/calmodulin dependent protein kinase IG
Database Link:	<a href="#">Entrez Gene 57172 Human Q96NX5</a>
Background:	This gene encodes a protein similar to calcium/calmodulin dependent protein kinase, however, its exact function is not known.
Synonyms:	CaMKI-gamma; CaMKIG; CLICKIII; dj272L16.1; OTTHUMP00000034556; VWS1



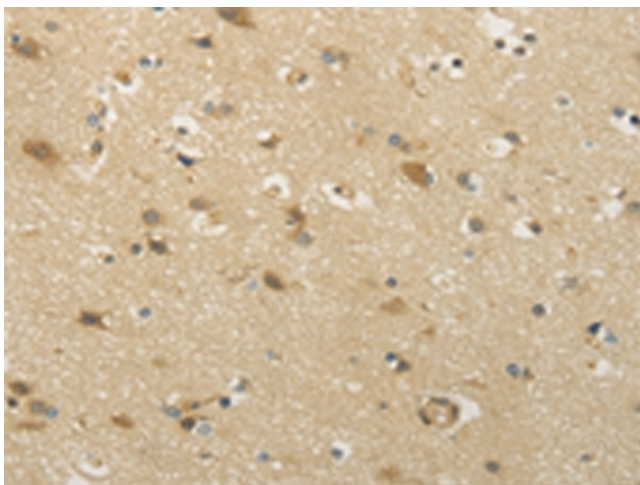
[View online »](#)

**Product images:**

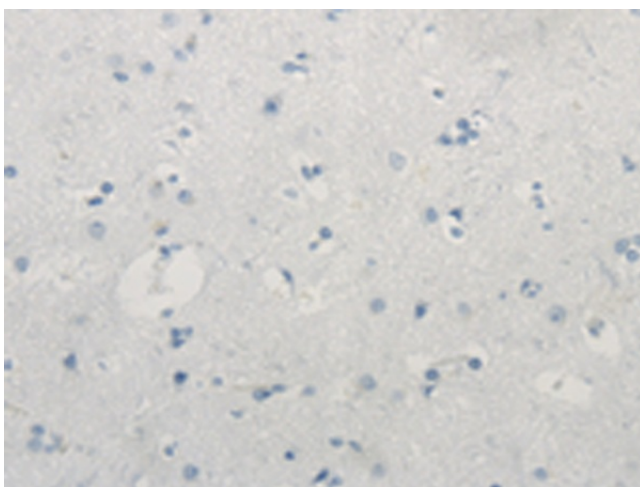
Immunohistochemistry of paraffin-embedded Human liver cancer tissue using TA364429 (CAMK1G Antibody) at dilution 1/30 (Original magnification:  $\times 200$ )



Immunohistochemistry of paraffin-embedded Human liver cancer tissue using TA364429 (CAMK1G Antibody) at dilution 1/30, treated with fusion protein. (Original magnification:  $\times 200$ )



Immunohistochemistry of paraffin-embedded Human brain tissue using TA364429 (CAMK1G Antibody) at dilution 1/30 (Original magnification: ×200)



Immunohistochemistry of paraffin-embedded Human brain tissue using TA364429 (CAMK1G Antibody) at dilution 1/30, treated with fusion protein. (Original magnification: ×200)