

Product datasheet for **TA364428S**

Calpain 5 (CAPN5) Rabbit Polyclonal Antibody

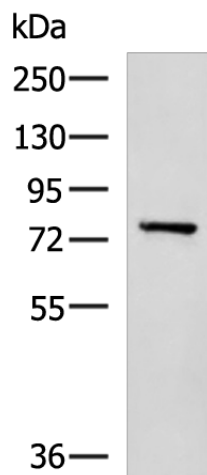
Product data:

Product Type:	Primary Antibodies
Applications:	WB
Recommended Dilution:	WB: 500-2000 WB positive control: Mouse brain tissue lysate
Reactivity:	Human, Mouse, Rat
Host:	Rabbit
Isotype:	IgG
Clonality:	Polyclonal
Immunogen:	Fusion protein of human CAPN5
Formulation:	pH7.4 PBS, 0.05% NaN ₃ , 40% Glycerol
Purification:	Antigen affinity purification
Conjugation:	Unconjugated
Storage:	Store at -20°C.
Stability:	1 year
Predicted Protein Size:	73 kDa
Gene Name:	calpain 5
Database Link:	Entrez Gene 726 Human O15484
Background:	Calpains are calcium-dependent cysteine proteases involved in signal transduction in a variety of cellular processes. A functional calpain protein consists of an invariant small subunit and 1 of a family of large subunits. CAPN5 is one of the large subunits. Unlike some of the calpains, CAPN5 and CAPN6 lack a calmodulin-like domain IV. Because of the significant similarity to <i>Caenorhabditis elegans</i> sex determination gene <i>tra-3</i> , CAPN5 is also called as HTRA3.
Synonyms:	FLJ46245; htra-3; HTRA3; nCL-3; NCL3



[View online »](#)

Product images:



Gel: 8%SDS-PAGE
Lysate: 40 µg
Lane: Mouse brain tissue lysate
Primary antibody: [TA364428] (CAPN5 Antibody)
at dilution 1/550
Secondary antibody: Goat anti rabbit IgG at
1/5000 dilution
Exposure time: 1 minute