

Product datasheet for **TA364424**

ATF3 Rabbit Polyclonal Antibody

Product data:

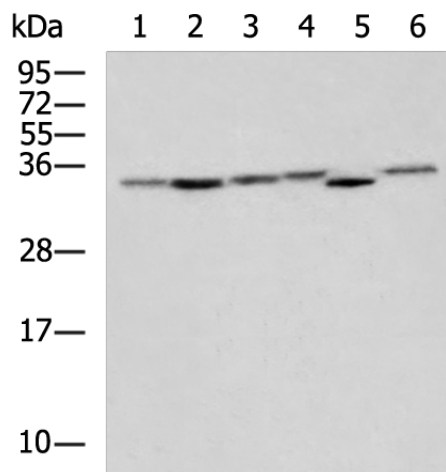
Product Type:	Primary Antibodies
Applications:	IHC, WB
Recommended Dilution:	WB: 500-2000 WB positive control: Hela, 293T, HepG2, LNCAP, RAW264.7, Raji cell lysates IHC: 50-200 Positive control: Human breast cancer Predicted cell location: Nucleus
Reactivity:	Human, Mouse, Rat
Host:	Rabbit
Isotype:	IgG
Clonality:	Polyclonal
Immunogen:	Fusion protein of human ATF3
Formulation:	pH7.4 PBS, 0.05% NaN ₃ , 40% Glycerol
Concentration:	lot specific
Purification:	Antigen affinity purification
Conjugation:	Unconjugated
Storage:	Store at -20°C.
Stability:	1 year
Predicted Protein Size:	21 kDa
Gene Name:	activating transcription factor 3
Database Link:	Entrez Gene 467 Human P18847
Background:	This gene encodes a member of the mammalian activation transcription factor/cAMP responsive element-binding (CREB) protein family of transcription factors. This gene is induced by a variety of signals, including many of those encountered by cancer cells, and is involved in the complex process of cellular stress response. Multiple transcript variants encoding different isoforms have been found for this gene. It is possible that alternative splicing of this gene may be physiologically important in the regulation of target genes.



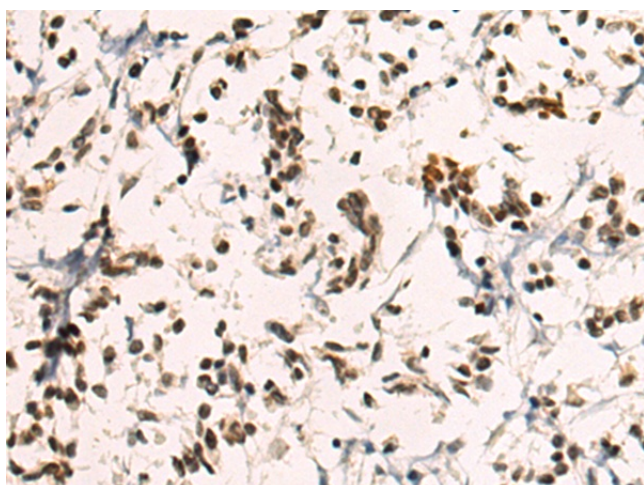
[View online »](#)

Synonyms: ATF3deltaZip2; ATF3deltaZip2c; ATF3deltaZip3; OTTHUMP00000034890

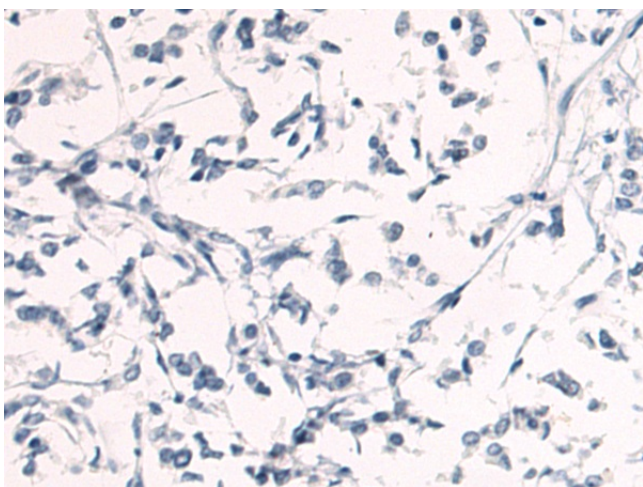
Product images:



Gel: 12%SDS-PAGE
Lysate: 40 µg
Lane 1-6: HeLa
293T
HepG2
LNCAP
RAW264.7
Raji cell lysates
Primary antibody: TA364424 (ATF3 Antibody) at dilution 1/600
Secondary antibody: Goat anti rabbit IgG at 1/5000 dilution
Exposure time: 30 seconds



Immunohistochemistry of paraffin-embedded Human breast cancer tissue using TA364424 (ATF3 Antibody) at dilution 1/85 (Original magnification: ×200)



Immunohistochemistry of paraffin-embedded Human breast cancer tissue using TA364424 (ATF3 Antibody) at dilution 1/85, treated with fusion protein. (Original magnification: ×200)