

Product datasheet for **TA364420S**

TRIM29 Rabbit Polyclonal Antibody

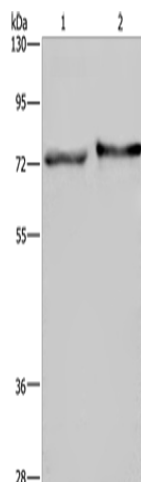
Product data:

| | |
|-------------------------|--|
| Product Type: | Primary Antibodies |
| Applications: | WB |
| Recommended Dilution: | WB: 500-2000 WB positive control: Mouse skin tissue and HT-29 cells |
| Reactivity: | Human, Mouse |
| Host: | Rabbit |
| Isotype: | IgG |
| Clonality: | Polyclonal |
| Immunogen: | Fusion protein of human TRIM29 |
| Formulation: | pH7.4 PBS, 0.05% NaN ₃ , 40% Glycerol |
| Purification: | Antigen affinity purification |
| Conjugation: | Unconjugated |
| Storage: | Store at -20°C. |
| Stability: | 1 year |
| Predicted Protein Size: | 66 kDa |
| Gene Name: | tripartite motif containing 29 |
| Database Link: | Entrez Gene 23650 Human Q14134 |
| Background: | The protein encoded by this gene belongs to the TRIM protein family. It has multiple zinc finger motifs and a leucine zipper motif. It has been proposed to form homo- or heterodimers which are involved in nucleic acid binding. Thus, it may act as a transcriptional regulatory factor involved in carcinogenesis and/or differentiation. It may also function in the suppression of radiosensitivity since it is associated with ataxia telangiectasia phenotype. |
| Synonyms: | ATDC; FLJ36085 |



[View online »](#)

Product images:



Gel: 8%SDS-PAGE

Lysate: 40 µg

Lane 1-2: Mouse skin tissue

HT29 cells

Primary antibody: [TA364420] (TRIM29 Antibody)
at dilution 1/450

Secondary antibody: Goat anti rabbit IgG at
1/8000 dilution

Exposure time: 10 seconds