

## Product datasheet for **TA364419**

### Ferritin Light Chain (FTL) Rabbit Polyclonal Antibody

#### Product data:

Product Type:	Primary Antibodies
Applications:	IHC, WB
Recommended Dilution:	WB: 500-2000 WB positive control: HepG2 and A549 cell lysates IHC: 50-200 Positive control: Human colorectal cancer Predicted cell location: Cytoplasm
Reactivity:	Human
Host:	Rabbit
Isotype:	IgG
Clonality:	Polyclonal
Immunogen:	Fusion protein of human FTL
Formulation:	pH7.4 PBS, 0.05% NaN <sub>3</sub> , 40% Glycerol
Concentration:	lot specific
Purification:	Antigen affinity purification
Conjugation:	Unconjugated
Storage:	Store at -20°C.
Stability:	1 year
Predicted Protein Size:	20 kDa
Gene Name:	ferritin, light polypeptide
Database Link:	<a href="#">Entrez Gene 2512 Human P02792</a>



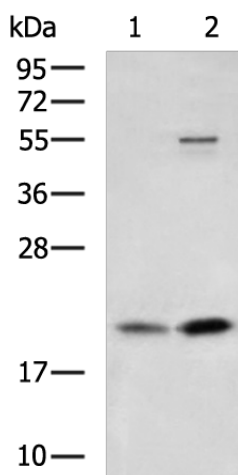
[View online »](#)

**Background:**

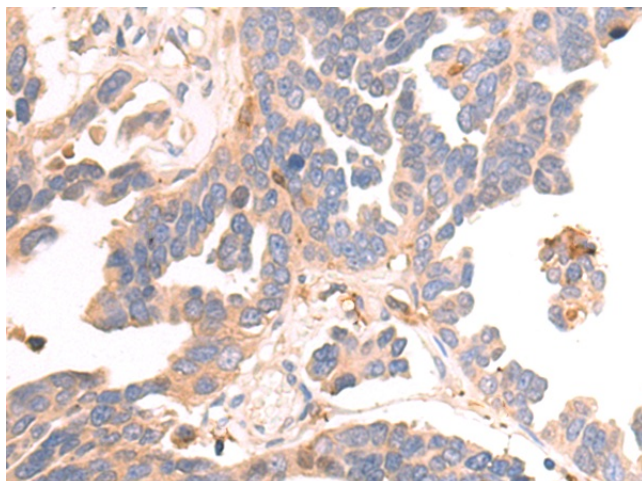
This gene encodes the light subunit of the ferritin protein. Ferritin is the major intracellular iron storage protein in prokaryotes and eukaryotes. It is composed of 24 subunits of the heavy and light ferritin chains. Variation in ferritin subunit composition may affect the rates of iron uptake and release in different tissues. A major function of ferritin is the storage of iron in a soluble and nontoxic state. Defects in this light chain ferritin gene are associated with several neurodegenerative diseases and hyperferritinemia-cataract syndrome. This gene has multiple pseudogenes.

**Synonyms:**

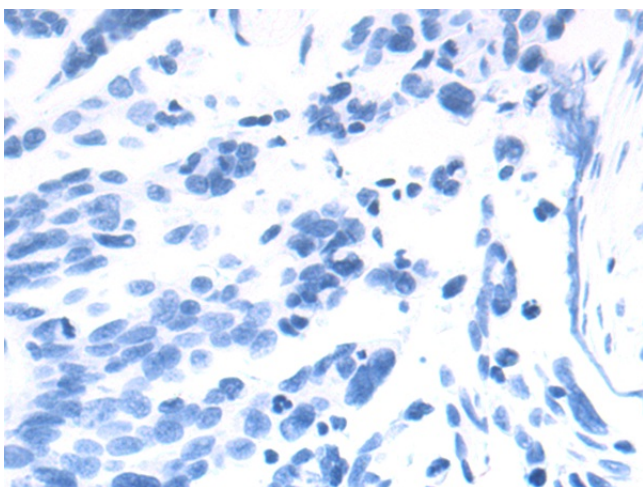
MGC71996

**Product images:**

Gel: 12%SDS-PAGE  
Lysate: 40 µg  
Lane 1-2: HepG2 and A549 cell lysates  
Primary antibody: TA364419 (FTL Antibody) at dilution 1/500  
Secondary antibody: Goat anti rabbit IgG at 1/5000 dilution  
Exposure time: 1 minute



Immunohistochemistry of paraffin-embedded Human colorectal cancer tissue using TA364419 (FTL Antibody) at dilution 1/85 (Original magnification: ×200)



Immunohistochemistry of paraffin-embedded Human colorectal cancer tissue using TA364419 (FTL Antibody) at dilution 1/85, treated with fusion protein. (Original magnification: ×200)