

Product datasheet for **TA364399**

FLAG Tag rabbit polyclonal antibody

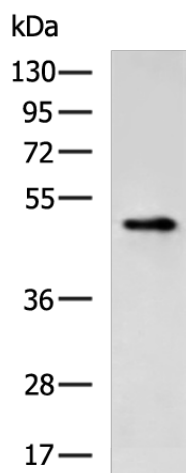
Product data:

Product Type:	Tag Antibodies
Product Name:	FLAG Tag rabbit polyclonal antibody
Applications:	WB
Recommended Dilution:	WB: 2000-10000 WB positive control: Fusion proteins containing the flag Tag
Reactivity:	FLAG Tag
Host:	Rabbit
Clonality:	Polyclonal
Immunogen:	Synthetic peptide: DYKDDDDK conjugated to KLH
Isotype:	IgG
Formulation:	pH7.4 PBS, 0.05% NaN ₃ , 40% Glycerol
Concentration:	lot specific
Purification:	Antigen affinity purification
Conjugation:	Unconjugated
Storage:	Store at -20°C.
Stability:	1 year
Predicted Protein Size:	50 kDa
Background:	The DYKDDDDK peptide has been used extensively as a general epitope tag in expression vectors. Due to its small size, it is unlikely to affect the tagged protein's biochemical properties. This antibody recognizes the DYKDDDDK peptide fused to either the amino- or carboxy-terminus of targeted proteins.



[View online »](#)

Product images:



Gel: 8%SDS-PAGE

Lysate: 1/0.5 μ g

Lane 1-2: 1/0.5 μ g Fusion proteins containing the Flag Tag

Primary antibody: TA364399 (Flag Tag Antibody) at dilution 1/2000

Secondary antibody: Goat anti rabbit IgG at 1/5000 dilution

Exposure time: 1 second