

## Product datasheet for **TA364397**

### Calca Guinea Pig Polyclonal Antibody

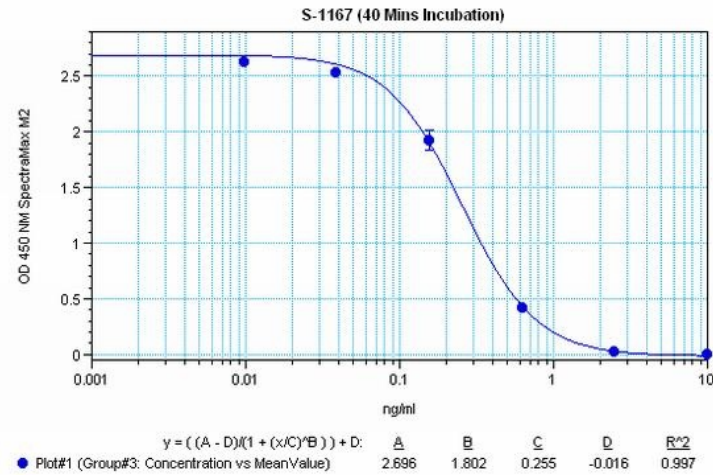
#### Product data:

Product Type:	Primary Antibodies
Applications:	ELISA
Recommended Dilution:	This antibody has been tested and validated in ELISA against $\alpha$ - Calcitonin Gene-Related Peptide. Other applications like immunohistochemistry (IHC), FACS or Western Blot may work as well. Optimal dilutions should be determined by the end user.
Reactivity:	Canine, Mouse, Rat
Host:	Guinea Pig
Clonality:	Polyclonal
Immunogen:	Synthetic peptide H-Ser-Cys-Asn-Thr-Ala-Thr-Cys-Val-Thr-His-Arg-Leu- Ala-Gly-Leu-Leu-Ser-Arg-Ser-Gly-Gly-Val-Val-Lys-Asp-Asn-Phe-Val- Pro-Thr-Asn-Val-Gly-Ser-Glu-Ala-Phe-NH <sub>2</sub> , (Disulfide bond) coupled to carrier protein.
Formulation:	Neat undiluted antiserum, lyophilized, packaged under nitrogen. Reconstitute by adding 50 $\mu$ l distilled water. This will give the equivalent of undiluted antiserum.
Concentration:	N/A
Conjugation:	Unconjugated
Storage:	Original vial: at least one year at 4° - 8°C from date of delivery. Minimize repeated thawing and freezing of the antiserum by freezing aliquots at -20°C or below.
Gene Name:	calcitonin/calcitonin-related polypeptide, alpha
Database Link:	<a href="#">Entrez Gene 12310 Mouse Q99JAO</a>
Background:	$\alpha$ -Calcitonin Gene-Related Peptide ( $\alpha$ -CGRP) is a regulatory neuropeptide of 37 amino acids and is formed by the alternative splicing of the calcitonin / CGRP gene located on chromosome 11. It is widely distributed in both the peripheral and central nervous system, predominantly in cell bodies of the dorsal root ganglion (DRG) and it is known to be a potent vasodilator with inotropic and chronotropic effects. This antibody was generated by immunization of guinea pigs with $\alpha$ -Calcitonin Gene- Related Peptide coupled to a carrier protein.
Synonyms:	CALC1; CGRP; CGRP-I; CGRP1; CT; katalcalcin; KC; MGC126648; PCT; Procalcitonin



[View online »](#)

Product images:



Typical titration curve of α-CGRP in a competitive ELISA with this antibody