

Product datasheet for **TA364328**

BAGE Rabbit Polyclonal Antibody

Product data:

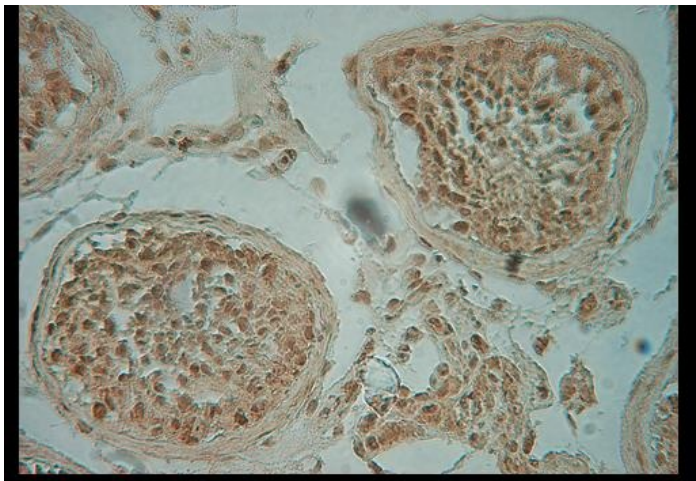
Product Type:	Primary Antibodies
Applications:	ELISA
Recommended Dilution:	This antibody has been tested and validated in ELISA against BAGE-1,- 2,-3,-4,-5.-6,-7. Other applications like immunohistochemistry (IHC), FACS or Western Blot may work as well. Optimal dilutions should be determined by the end user.
Reactivity:	Human
Host:	Rabbit
Clonality:	Polyclonal
Immunogen:	Synthetic peptide H-Met-Ala-Ala-Gly-Val-Val-Phe-Leu-Ala-Leu-Ser-Ala- Gln-Leu-Leu-Gln-Ala-Arg-Leu-Met-Lys-Glu-Glu-Ser-Pro-Val-Val-coupled to carrier protein.
Formulation:	Neat undiluted antiserum, lyophilized, packaged under nitrogen. Reconstitute by adding 50µl distilled water. This will give the equivalent of undiluted antiserum.
Concentration:	N/A
Conjugation:	Unconjugated
Storage:	Original vial: at least one year at 4° - 8°C from date of delivery. Minimize repeated thawing and freezing of the antiserum by freezing aliquots at -20°C or below.
Gene Name:	B melanoma antigen
Database Link:	Entrez Gene 574 Human Q13072
Background:	The ancestral BAGE was generated by juxtacentromeric reshuffling of the KMT2C/MLL3 gene. The BAGE family was expanded by juxtacentromeric movement and/or acrocentric exchanges and it is composed of expressed genes that map to the juxtacentromeric regions of chromosomes 13 and 21 as well as of unexpressed gene fragments that scattered in the juxtacentromeric regions of several chromosomes, including chromosomes 9, 13, 18 and 21. BAGE-1 encodes a human tumor antigen recognized by autologous cytolytic T lymphocyte BAGE-2 is an RNA gene and is affiliated with the ncRNA class. Diseases associated with BAGE-2 include Melanoma. BAGE-3,-4,-5,-6 and -7 are Protein Coding genes. Diseases associated with BAGE-3,-4,-5,-6 and -7 include Melanoma. This antibody was generated by immunization of rabbits with BAGE-1,-2,-3,-4,-5.-6,-7 coupled to a carrier protein.



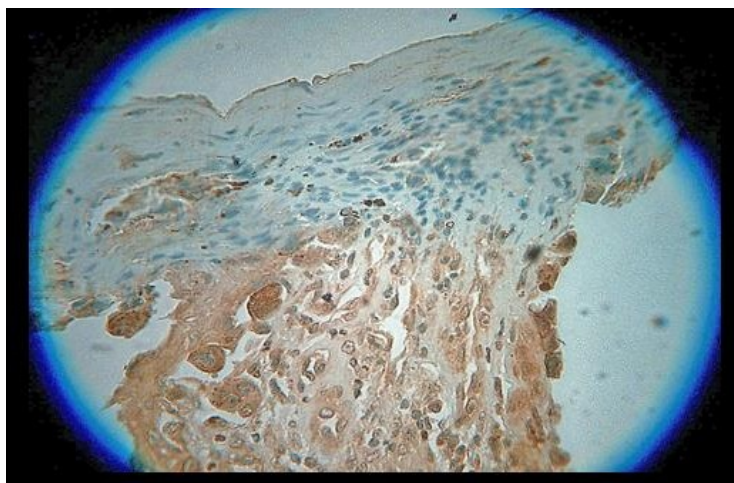
[View online »](#)

Synonyms: BAGE1; CT2.1

Product images:



Tissues used: Normal human adult testis
Dilution: 1:1000
Incubation time: 3 hours at 37°C
Pre-treatment: 0.01M Citrate buffer pH 6.0
Secondary antibody: poly-HRP



Tissues used: Human skin melanoma
Dilution: 1:1000
Incubation time: 3 hours at 37°C
Pre-treatment: 0.01M Citrate buffer pH 6.0
Secondary antibody: poly-HRP