

## Product datasheet for **TA364312**

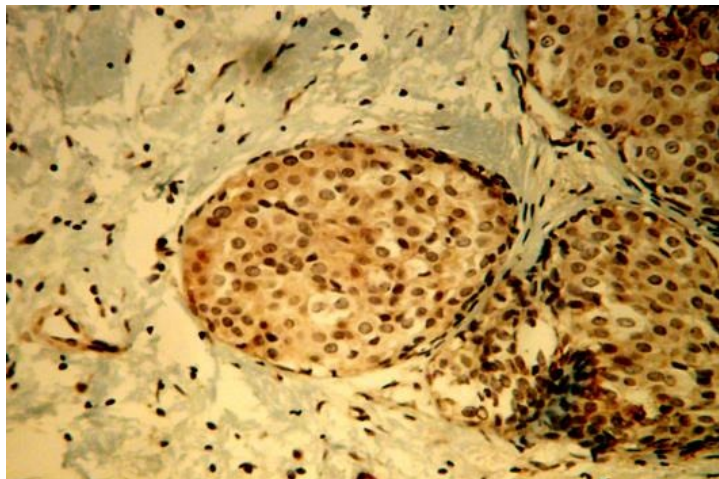
### Osteopontin (SPP1) Rabbit Polyclonal Antibody

#### Product data:

Product Type:	Primary Antibodies
Applications:	ELISA
Recommended Dilution:	This antibody has been tested and validated in ELISA against Osteopontin. Other applications like immunohistochemistry (IHC), FACS or Western Blot may work as well. Optimal dilutions should be determined by the end user.
Reactivity:	Human
Host:	Rabbit
Clonality:	Polyclonal
Formulation:	Neat undiluted antiserum, lyophilized, packaged under nitrogen. Reconstitute by adding 50µl distilled water. This will give the equivalent of undiluted antiserum.
Concentration:	N/A
Conjugation:	Unconjugated
Storage:	Original vial: at least one year at 4° - 8°C from date of delivery. Minimize repeated thawing and freezing of the antiserum by freezing aliquots at -20°C or below.
Gene Name:	secreted phosphoprotein 1
Database Link:	<a href="#">Entrez Gene 6696 Human P10451</a>
Background:	Osteopontin (OPN) is a protein that in humans is encoded by the SPP1 gene (secreted phosphoprotein 1). It is a Sibling (glycoprotein) that was first identified in 1986 in osteoblasts. Osteopontin is biosynthesized by a variety of tissue types including cardiac fibroblasts, preosteoblasts, osteoblasts, osteocytes, odontoblasts, some bone marrow cells, hypertrophic chondrocytes, dendritic cells, macrophages, smooth muscle, skeletal muscle myoblasts, endothelial cells, and extraosseous (non-bone) cells in the inner ear, brain, kidney, deciduum, and placenta. Synthesis of osteopontin is stimulated by calcitriol (1,25-dihydroxy- vitamin D3). This antibody was generated by immunization of rabbits with Osteopontin coupled to a carrier protein.
Synonyms:	BNSP; BSPI; ETA-1; MGC110940; Nephropontin; OPN; osteopontin; SPP-1; Uropontin



[View online »](#)

**Product images:**

Tissues used: human breast tumor (invasive ductal carcinoma)  
Dilution: 1:16,000  
Incubation time: Overnight at 4°C  
Pre-treatment: 0.01M citrate buffer pH 6.0

