

Product datasheet for **TA364286**

NMU Rabbit Polyclonal Antibody

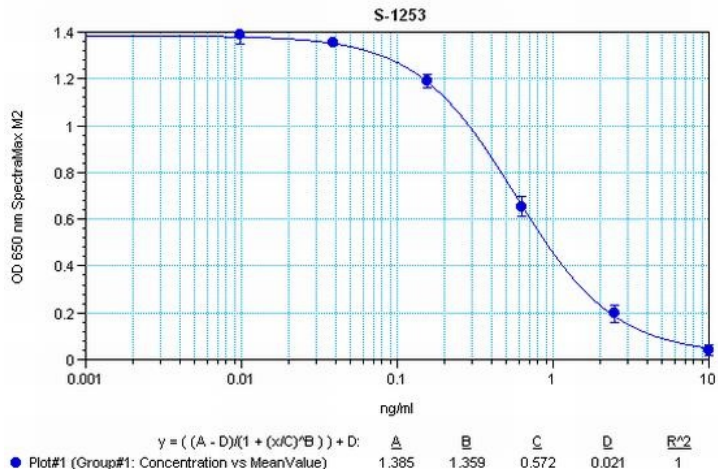
Product data:

Product Type:	Primary Antibodies
Applications:	ELISA
Recommended Dilution:	This antibody has been tested and validated in ELISA against Neuromedin U-25. Other applications like immunohistochemistry (IHC), FACS or Western Blot may work as well. Optimal dilutions should be determined by the end user.
Reactivity:	Human
Host:	Rabbit
Clonality:	Polyclonal
Immunogen:	Synthetic peptide H-Phe-Arg-Val-Asp-Glu-Glu-Phe-Gln-Ser-Pro-Phe- Ala-Ser-Gln-Ser-Arg-Gly-Tyr-Phe-Leu-Phe-Arg-Pro-Arg-Asn-NH ₂ coupled to carrier protein.
Formulation:	Neat undiluted antiserum, lyophilized, packaged under nitrogen. Reconstitute by adding 50µl distilled water. This will give the equivalent of undiluted antiserum.
Concentration:	N/A
Conjugation:	Unconjugated
Storage:	Original vial: at least one year at 4° - 8°C from date of delivery. Minimize repeated thawing and freezing of the antiserum by freezing aliquots at -20°C or below.
Gene Name:	neuromedin U
Database Link:	Entrez Gene 10874 Human P48645
Background:	Neuromedin U is a highly conserved neuropeptide found in the brain of humans and other mammals. It is known to have diverse functions including contraction of smooth muscle, regulation of blood pressure, pain perception, appetite, bone growth, and hormone release. Neuromedin U exists as multiple isoforms such as U-25 in humans and U-23 in rats. Like many neuroactive peptides, Neuromedin U is amidated at the C-terminus, and all isoforms have identical C-terminal heptapeptides. This antibody was generated by immunization of rabbits with Neuromedin U-25 coupled to a carrier protein.
Synonyms:	NMU



[View online »](#)

Product images:



Typical titration curve of Neuromedin U-25 in a competitive ELISA with this antibody