

## Product datasheet for **TA364221**

### Vasopressin (AVP) Rabbit Polyclonal Antibody

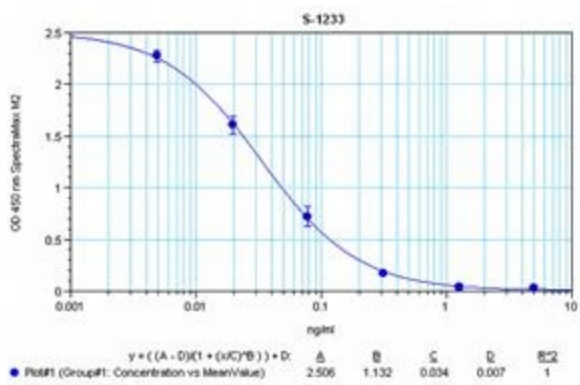
#### Product data:

|                       |  |
|-----------------------|--|
| Product Type:         | Primary Antibodies   |
| Applications:         | ELISA  |
| Recommended Dilution: | This antibody has been tested and validated in ELISA against (Arg8)- Vasopressin. Other applications like immunohistochemistry (IHC), FACS or Western Blot may work as well. Optimal dilutions should be determined by the end user.   |
| Reactivity:           | Human, Mammalian   |
| Host:                 | Rabbit   |
| Clonality:            | Polyclonal   |
| Immunogen:            | Synthetic peptide H-Cys-Tyr-Phe-Gln-Asn-Cys-Pro-Arg-Gly-NH <sub>2</sub> , (disulfide bond) coupled to carrier protein.   |
| Formulation:          | Neat undiluted antiserum, lyophilized, packaged under nitrogen. Reconstitute by adding 50µl distilled water. This will give the equivalent of undiluted antiserum; does not contain any preservative.  |
| Concentration:        | N/A  |
| Conjugation:          | Unconjugated   |
| Storage:              | Original vial: at least one year at 4° - 8°C from date of delivery. Minimize repeated thawing and freezing of the stock solution by freezing aliquots of the stock solution at -20°C or below.   |
| Gene Name:            | arginine vasopressin   |
| Database Link:        | <a href="#">Entrez Gene 551 Human P01185</a>   |
| Background:           | (Arg8)-Vasopressin or argipressin is an antidiuretic peptide hormone that plays a key role in maintaining plasma osmolality. The peptide released from the posterior pituitary gland promotes renal tubular reabsorption of water. In high concentration, it also raises blood pressure by inducing moderate vasoconstriction. Argipressin is involved in the control of circadian rhythm, thermoregulation, and ACTH release in the brain. This antibody was generated by immunization of rabbits with (Arg8)-Vasopressin coupled to a carrier protein. |
| Synonyms:             | ADH; ARVP; AVP-NPII; AVRP; neurohypophyseal; VP  |



[View online »](#)

Product images:



Typical titration curve of (Arg8)-Vasopressin in a competitive ELISA with this antibody