

Product datasheet for TA364192

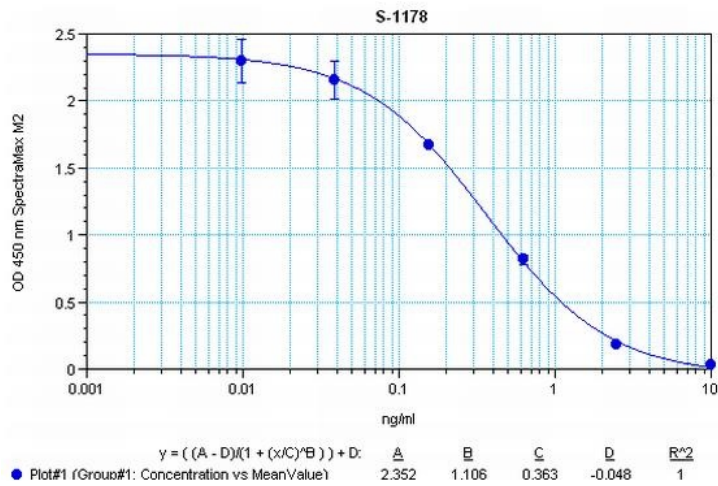
Parathyroid hormone related protein (PTHrH) Rabbit Polyclonal Antibody

Product data:

Product Type:	Primary Antibodies
Applications:	ELISA
Recommended Dilution:	This antibody has been tested and validated in ELISA against pTH- related protein (1-34). Other applications like immunohistochemistry (IHC), FACS or Western Blot may work as well. Optimal dilutions should be determined by the end user.
Reactivity:	Human, Rat
Host:	Rabbit
Clonality:	Polyclonal
Immunogen:	Synthetic peptide H-Ala-Val-Ser-Glu-His-Gln-Leu-Leu-His-Asp-Lys-Gly- Lys-Ser-Ile-Gln-Asp-Leu-Arg-Arg-Arg-Phe-Phe-Leu-His-His-Leu-Ile-Ala- Glu-Ile-His-Thr-Ala-OH (Disulfide bond) coupled to carrier protein.
Formulation:	Neat undiluted antiserum, lyophilized, packaged under nitrogen. Reconstitute by adding 50µl distilled water. This will give the equivalent of undiluted antiserum.
Concentration:	N/A
Conjugation:	Unconjugated
Storage:	Original vial: at least one year at 4° - 8°C from date of delivery. Minimize repeated thawing and freezing of the antiserum by freezing aliquots at -20°C or below.
Gene Name:	parathyroid hormone-like hormone
Database Link:	Entrez Gene 5744 Human P12272
Background:	pTH-related protein (1-34), or Parathyroid hormone-related protein, is initially translated as a 177 amino acid protein, which is then cleaved into pTH-related protein (1-34). It contains two helical domains spanning sequence, 13-18 and 20-34, and it is encoded by the PTHrH gene in human. An excessive production of pTH- related protein can cause malignancy-associated hypercalcemia This antibody was generated by immunization of rabbits with pTH-related protein (1- 34) coupled to a carrier protein.
Synonyms:	HHM; MGC14611; osteostatin; PLP; PTH-rP; PTHR; PTHRP


[View online »](#)

Product images:



Typical titration curve of pTH-related protein (34) in a competitive ELISA with this antibody