

Product datasheet for **TA364024**

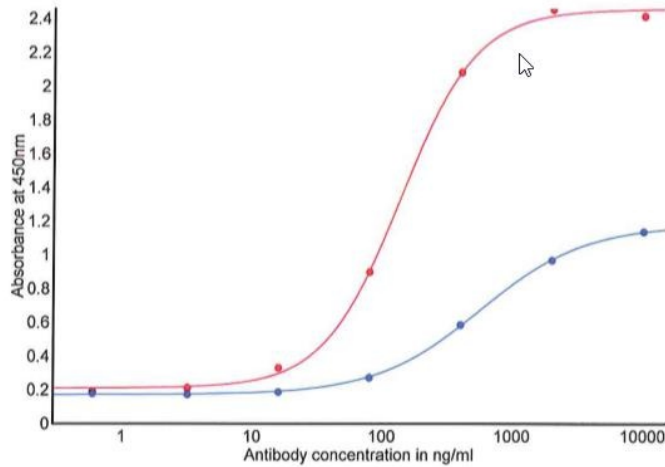
Nppc Rabbit Polyclonal Antibody

Product data:

Product Type:	Primary Antibodies
Applications:	ELISA
Recommended Dilution:	This antibody has been tested and validated in ELISA against C-Type Natriuretic Peptide (1-29). Other applications like immunohistochemistry (IHC), FACS or Western Blot may work as well. Optimal dilutions should be determined by the end user.
Reactivity:	Mouse, Porcine, Rat
Host:	Rabbit
Clonality:	Polyclonal
Immunogen:	Synthetic peptide H-Asp-Leu-Arg-Val-Asp-Thr-Lys-Ser-Arg-Ala-Ala-Trp- Ala-Arg-Leu-Leu-His-Glu-His-Pro-Asn-Ala-Arg-Lys-Tyr-Lys-Gly-Gly-Asn- OH coupled to a carrier protein.
Formulation:	Neat undiluted antiserum, lyophilized, packaged under nitrogen. Reconstitute by adding 50µl distilled water. This will give the equivalent of undiluted antiserum.
Concentration:	N/A
Conjugation:	Unconjugated
Storage:	Original vial: at least one year at 4° - 8°C from date of delivery. Minimize repeated thawing and freezing of the antiserum by freezing aliquots at -20°C or below.
Gene Name:	natriuretic peptide type C
Database Link:	Entrez Gene 18159 Mouse Q61839
Background:	Natriuretic peptide precursor C (NPPC) is a protein that in humans is encoded by the NPPC gene. The precursor NPPC protein is cleaved to the 22 amino acid peptide C- type natriuretic peptide (CNP). Natriuretic peptides comprise a family of 3 structurally related molecules: atrial natriuretic peptide (ANP), brain natriuretic peptide (BNP), and C-type natriuretic peptide (CNP). These peptides possess potent natriuretic, diuretic, and vasodilating activities and are implicated in body fluid homeostasis and blood pressure control. C-type natriuretic peptide (CNP) generates multiple protein products, include the cardiac natriuretic peptides CNP-53, CNP-29 and CNP-22. This antibody was generated by immunization of rabbits with C-Type Natriuretic Peptide (1-29) coupled to a carrier protein.
Synonyms:	CNP; CNP2; OTTHUMP00000203815



[View online »](#)

Product images:

Typical titration curve of purified anti CNP in a competitive ELISA with this antibody. Procedure: antibody was applied to goat anti rabbit IgG-coated microtiter plate. tracer or tracer / antigen mixture was added, developed with streptavidin-HRPO and TMB as substrate for HRPO. Red curve: titration of antibody with CNP tracer (biotinylated peptide and streptavidin-HRPO). Blue curve: inhibition of tracer by antigen, showing affinity of antibody for CNP and tracer.