

Product datasheet for **TA363980**

IAPP Rabbit Polyclonal Antibody

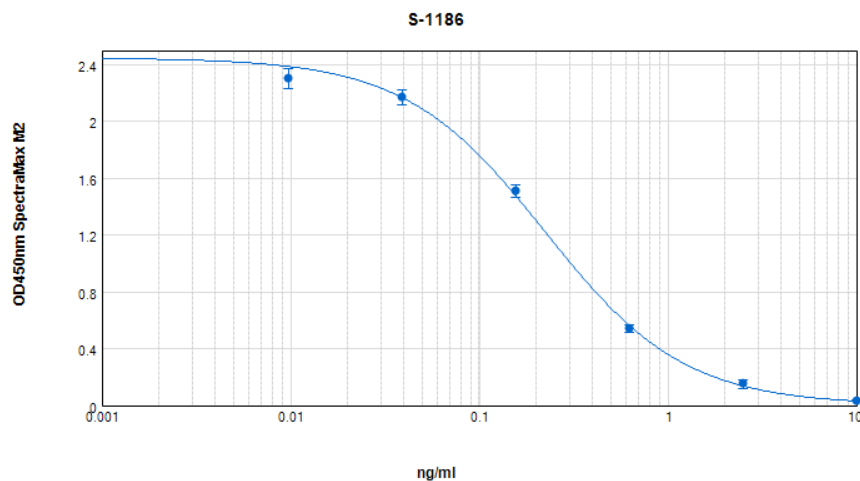
Product data:

Product Type:	Primary Antibodies
Applications:	ELISA
Recommended Dilution:	This antibody has been tested and validated in ELISA against Amylin. Other applications like immunohistochemistry (IHC), FACS or Western Blot may work as well. Optimal dilutions should be determined by the end user.
Reactivity:	Rat
Host:	Rabbit
Clonality:	Polyclonal
Immunogen:	Synthetic peptide H-Lys-Cys-Asn-Thr-Ala-Thr-Cys-Ala-Thr-Gln-Arg- Leu-Ala-Asn-Phe-Leu-Val-Arg-Ser-Ser-Asn-Asn-Leu-Gly-Pro-Val- Leu-Pro-Pro-Thr-Asn-Val-Gly-Ser-Asn-Thr-Tyr-NH ₂ , (Disulfide bond) coupled to carrier protein.
Formulation:	Protein A affinity purified from antiserum, lyophilized, packaged under nitrogen. Reconstitute by adding 0.2ml distilled water. This stock solution contains 2mg/ml IgG, phosphate buffered saline pH 7.4 (PBS), and 0.02% (w/v) Thimerosal as a preservative.
Concentration:	N/A
Conjugation:	Unconjugated
Storage:	Original vial: at least one year at 4° - 8°C from date of delivery. Minimize repeated thawing and freezing of the antiserum by freezing aliquots at -20°C or below.
Gene Name:	islet amyloid polypeptide
Database Link:	P12968
Background:	Amylin (also known as islet amyloid polypeptide (IAPP)) is a 37 amino acid peptide hormone with a disulfide bridge between Cys2 and Cys7. Both the amidated C-terminus and the disulfide bridge are necessary for the full biological activity of Amylin. It is co-secreted with insulin from the pancreatic β -cells and plays an important role in the glycemic control, regulating it by slowing gastric emptying and promoting satiety. It is also involved in bone metabolism, along with the related peptides calcitonin and calcitonin gene related peptide. This antibody was generated by immunization of rabbits with Amylin coupled to a carrier protein.
Synonyms:	AMYLIN; DAP; IAP



[View online »](#)

Product images:



Typical titration curve of mouse / rat Amylin in a competitive ELISA with this antibody