

Product datasheet for **TA363963**

ACTH (POMC) Rabbit Polyclonal Antibody

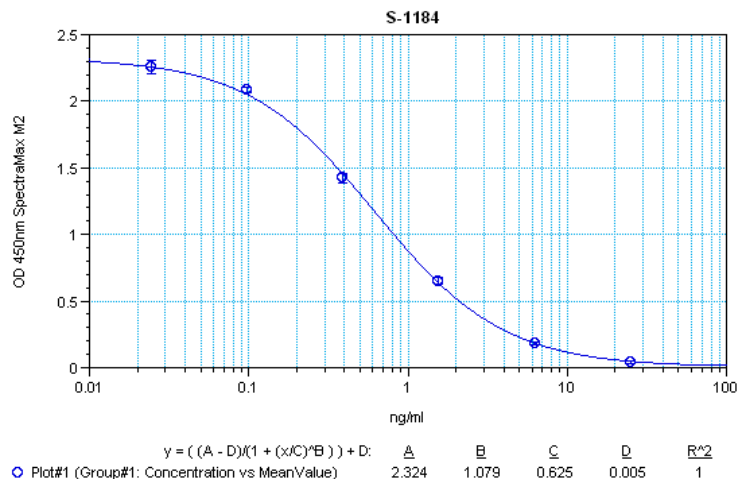
Product data:

Product Type:	Primary Antibodies
Applications:	ELISA
Recommended Dilution:	This antibody has been tested and validated in ELISA against Adrenocorticotrophic Hormone (18-39). Other applications like immunohistochemistry (IHC), FACS or Western Blot may work as well. Optimal dilutions should be determined by the end user.
Reactivity:	Human
Host:	Rabbit
Clonality:	Polyclonal
Immunogen:	Synthetic peptide H-Arg-Pro-Val-Lys-Val-Tyr-Pro-Asn-Gly-Ala-Glu-Asp- Glu-Ser-Ala-Glu-Ala-Phe-Pro-Leu-Glu-Phe-OH coupled to carrier protein.
Formulation:	Neat undiluted antiserum, lyophilized, packaged under nitrogen. Reconstitute by adding 50µl distilled water. This will give the equivalent of undiluted antiserum.
Concentration:	N/A
Conjugation:	Unconjugated
Storage:	Original vial: at least one year at 4° - 8°C from date of delivery. Minimize repeated thawing and freezing of the antiserum by freezing aliquots at -20°C or below.
Gene Name:	proopiomelanocortin
Database Link:	Entrez Gene 5443 Human P01189
Background:	Adrenocorticotrophic Hormone (ACTH) (18-39) fragment is known as the Corticotropin-like Intermediate Lobe Peptide. It stimulates insulin secretion as well as amylase and protein secretion in a dose-dependent manner similar to those of secretin and carbamylcholine. This antibody was generated by immunization of rabbits with Adrenocorticotrophic Hormone (18-39) coupled to a carrier protein.
Synonyms:	ACTH; adrenocorticotropin; alpha-MSH; beta-endorphin; beta-LPH; beta-MSH; CLIP; Corticotropin-lipotropin; gamma-LPH; gamma-MSH; LPH; met-enkephalin; MSH; NPP; OTTHUMP00000119991; OTTHUMP00000200964; POC; pro-ACTH-endorphin; proopiomelanocortin



[View online »](#)

Product images:



Typical titration curve of Adrenocorticotropin Hormone (1-39) in a competitive ELISA with this antibody