

Product datasheet for **TA363951**

Parathyroid Hormone (PTH) Rabbit Polyclonal Antibody

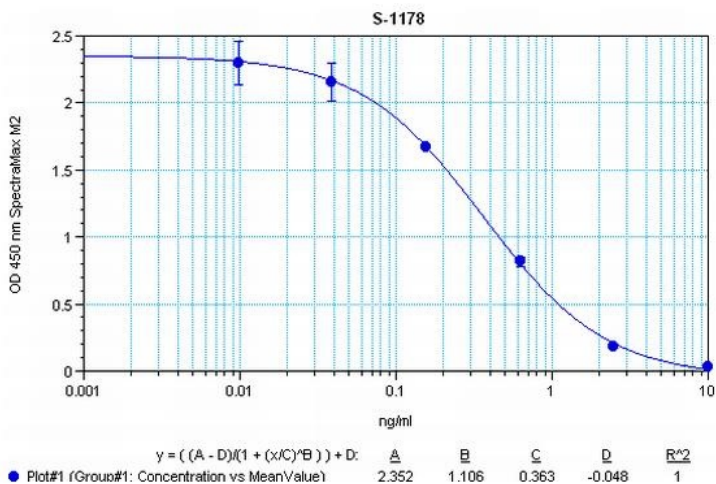
Product data:

Product Type:	Primary Antibodies
Applications:	ELISA
Recommended Dilution:	This antibody has been tested and validated in ELISA against pTH. Other applications like immunohistochemistry (IHC), FACS or Western Blot may work as well. Optimal dilutions should be determined by the end user.
Reactivity:	Human
Host:	Rabbit
Clonality:	Polyclonal
Immunogen:	Synthetic peptide H-Ser-Val-Ser-Glu-Ile-Gln-Leu-Met-His-Asn-Leu-Gly- Lys-His-Leu-Asn-Ser-Met-Glu-Arg-Val-Glu-Trp-Leu-Arg-Lys-Lys-Leu- Gln-Asp-Val-His-Asn-Phe-OH (Disulfide bond) coupled to carrier protein.
Formulation:	Neat undiluted antiserum, lyophilized, packaged under nitrogen. Reconstitute by adding 50µl distilled water. This will give the equivalent of undiluted antiserum.
Concentration:	N/A
Conjugation:	Unconjugated
Storage:	Original vial: at least one year at 4° - 8°C from date of delivery. Minimize repeated thawing and freezing of the antiserum by freezing aliquots at -20°C or below.
Gene Name:	parathyroid hormone
Database Link:	Entrez Gene 5741 Human P01270
Background:	Parathyroid Hormone (pTH) (1-34), is a peptide fragment of the naturally occurring human parathyroid hormone and is secreted from cells of the parathyroid glands and finds its major target cells in bone and kidney. It is an important regulator of calcium and phosphorus metabolism, playing a role in calcium homeostasis of bone, kidney, breast, and placenta. pTH (1-34) administration suppresses cardiovascular calcification and down-regulates aortic osteogenic programs driven by diabetes and dyslipidemia. This antibody was generated by immunization of rabbits with pTH (1-34) coupled to a carrier protein.
Synonyms:	parathormone; Parathyrin; PTH1



[View online »](#)

Product images:



Typical titration curve of pTH (1-34) in a competitive ELISA with this antibody