

Product datasheet for **TA363941**

PYY Rabbit Polyclonal Antibody

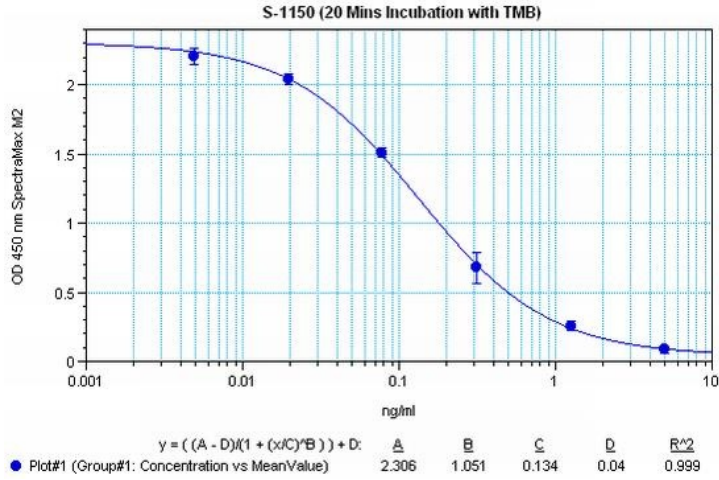
Product data:

Product Type:	Primary Antibodies
Applications:	ELISA
Recommended Dilution:	This antibody has been tested and validated in ELISA against Peptide YY. Other applications like immunohistochemistry (IHC), FACS or Western Blot may work as well. Optimal dilutions should be determined by the end user.
Reactivity:	Canine, Mouse, Porcine, Rat
Host:	Rabbit
Clonality:	Polyclonal
Immunogen:	Synthetic peptide H-Tyr-Pro-Ala-Lys-Pro-Glu-Ala-Pro-Gly-Glu-Asp-Ala- Ser-Pro-Glu-Glu-Leu-Ser-Arg-Tyr-Tyr-Ala-Ser-Leu-Arg-His-Tyr-Leu-Asn- Leu-Val-Thr-Arg-Gln-Arg-Tyr-NH ₂ coupled to a carrier protein.
Formulation:	Neat undiluted antiserum, lyophilized, packaged under nitrogen. Reconstitute by adding 50µl distilled water. This will give the equivalent of undiluted antiserum.
Concentration:	N/A
Conjugation:	Unconjugated
Storage:	Original vial: at least one year at 4° - 8°C from date of delivery. Minimize repeated thawing and freezing of the antiserum by freezing aliquots at -20°C or below.
Database Link:	P68004
Background:	Peptide YY, also known as peptide tyrosine tyrosine, is a 36-amino acid peptide related to the pancreatic peptide family, by having 18 of its 36 amino acids located in the same positions as pancreatic peptide. The two major forms of peptide YY are PYY1-36 and PYY3-36, which have PP fold structural motifs. It is released from cells in the ileum and colon in response to feeding and exerts its action through NPY receptors. It is shown to reduce appetite and may suppress pancreatic secretion. This antibody was generated by immunization of rabbits with Peptide YY coupled to a carrier protein.
Synonyms:	PYY-I; PYY1



[View online »](#)

Product images:



Typical titration curve of Peptide YY in a competitive ELISA with this antibody