

## Product datasheet for **TA363936**

### Pancreatic Polypeptide (PPY) Rabbit Polyclonal Antibody

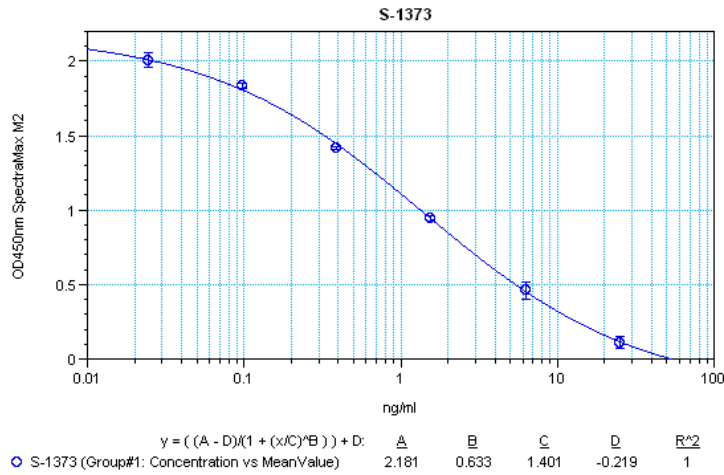
#### Product data:

Product Type:	Primary Antibodies
Applications:	ELISA
Recommended Dilution:	This antibody has been tested and validated in ELISA against Pancreatic Polypeptide. Other applications like immunohistochemistry (IHC), FACS or Western Blot may work as well. Optimal dilutions should be determined by the end user.
Reactivity:	Human
Host:	Rabbit
Clonality:	Polyclonal
Immunogen:	Synthetic peptide H-Ala-Pro-Leu-Glu-Pro-Val-Tyr-Pro-Gly-Asp-Asn-Ala- Thr-Pro-Glu-Gln-Met-Ala-Gln-Tyr-Ala-Ala-Asp-Leu-Arg-Arg-Tyr-Ile-Asn- Met-Leu-Thr-Arg-Pro-Arg-Tyr-NH <sub>2</sub> coupled to carrier protein.
Formulation:	Neat undiluted antiserum, lyophilized, packaged under nitrogen. Reconstitute by adding 50µl distilled water. This will give the equivalent of undiluted antiserum.
Concentration:	N/A
Conjugation:	Unconjugated
Storage:	Original vial: at least one year at 4° - 8°C from date of delivery. Minimize repeated thawing and freezing of the antiserum by freezing aliquots at -20°C or below.
Gene Name:	pancreatic polypeptide
Database Link:	<a href="#">Entrez Gene 5539 Human P01298</a>
Background:	Pancreatic Polypeptide (PP) is a 36 amino acid anorexigenic peptide hormone secreted by the PP cells in the endocrine pancreas. The function of Pancreatic Polypeptide is to self-regulate pancreatic secretion activities such as endocrine and exocrine. It also has effects on hepatic glycogen levels and gastrointestinal secretions. Secretion of Pancreatic Polypeptide can be accomplished through electrical stimulation of the vagus nerve. Pancreatic Polypeptide is related to Peptide YY and Neuropeptide Y (NPY). This antibody was generated by immunization of rabbits with Pancreatic Polypeptide coupled to a carrier protein.
Synonyms:	Obinepitide; PNP; PP



[View online »](#)

Product images:



Typical titration curve of anti human Pancreatic Polypeptide in a competitive ELISA with this antibody