

## Product datasheet for **TA363902**

### Corticotropin Releasing Factor (CRH) Rabbit Polyclonal Antibody

#### Product data:

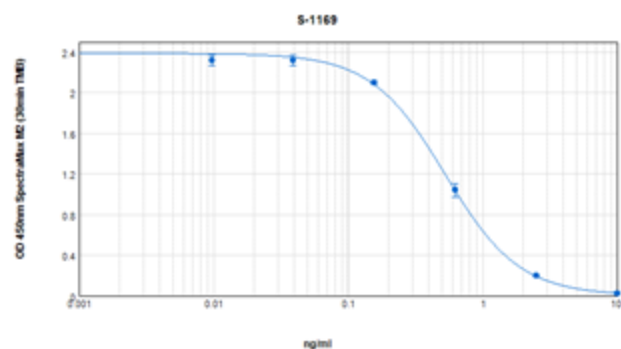
Product Type:	Primary Antibodies
Applications:	ELISA
Recommended Dilution:	This antibody has been tested and validated in ELISA against Corticotropin Releasing Factor. Other applications like immunohistochemistry (IHC), FACS or Western Blot may work as well. Optimal dilutions should be determined by the end user.
Reactivity:	Human, Mouse, Rat
Host:	Rabbit
Clonality:	Polyclonal
Immunogen:	Synthetic peptide H-Ser-Glu-Glu-Pro-Pro-Ile-Ser-Leu-Asp-Leu-Thr- Phe-His-Leu-Leu-Arg-Glu-Val-Leu-Glu-Met-Ala-Arg-Ala-Glu-Gln- Leu-Ala-Gln-Gln-Ala-His-Ser-Asn-Arg-Lys-Leu-Met-Glu-Ile-Ile-NH <sub>2</sub> coupled to carrier protein.
Formulation:	This polyclonal antibody is supplied as a lyophilized powder. The powder should be rehydrated with 50ml of RIA buffer. Upon reconstitution to 50ml total volume, the solution contains 0.1M sodium phosphate buffer (pH 7.4), 0.05M NaCl, 0.1% BSA, 0.01% NaN <sub>3</sub> , and 0.1% Triton X-100. Store at 4° - 8°C. This should ensure antibody stability for approximately one month.
Concentration:	N/A
Conjugation:	Unconjugated
Storage:	Original vial: at least one year at 4° - 8°C from date of delivery. Minimize repeated thawing and freezing of the antiserum by freezing aliquots at -20°C or below.
Gene Name:	corticotropin releasing hormone
Database Link:	<a href="#">Entrez Gene 1392 Human P06850</a>
Background:	Corticotropin-Releasing Factor (CRF, also known as Corticoliberin) is a 41 amino acid peptide hormone derived from the 196-amino acid preprohormone. It is secreted in the hypothalamus in response to stress, and stimulates both the synthesis and the secretion of adrenocorticotrophic hormone (ACTH). CRF is also synthesized in peripheral tissues and placenta and it is known to suppress appetite and increase subjective feelings of anxiety. This antibody was generated by immunization of rabbits with CRF coupled to a carrier protein.



[View online »](#)

Synonyms: CRF

### Product images:



Typical titration curve of Somatostatin-14 in a competitive ELISA with this antibody