

Product datasheet for **TA363897**

calc1 Rabbit Polyclonal Antibody

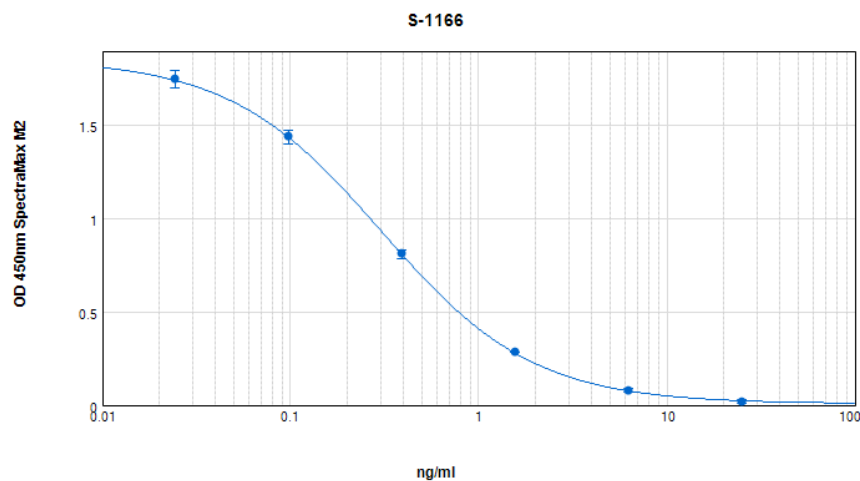
Product data:

Product Type:	Primary Antibodies
Applications:	ELISA
Recommended Dilution:	This antibody has been tested and validated in ELISA against Calcitonin. Other applications like immunohistochemistry (IHC), FACS or Western Blot may work as well. Optimal dilutions should be determined by the end user.
Host:	Rabbit
Clonality:	Polyclonal
Immunogen:	Synthetic peptide H-Cys-Ser-Asn-Leu-Ser-Thr-Cys-Val-Leu-Gly-Lys- Leu-Ser-Gln-Glu-Leu-His-Lys-Leu-Gln-Thr-Tyr-Pro-Arg-Thr-Asn-Thr-Gly- Ser-Gly-Thr-Pro-NH ₂ , (Disulfide bond) coupled to carrier protein.
Formulation:	Protein A affinity purified from antiserum, lyophilized, packaged under nitrogen. Reconstitute by adding 0.2ml distilled water. This stock solution contains 2mg/ml IgG, phosphate buffer saline pH 7.4 (PBS), and 0.02% (w/v) Thimerosal as a preservative.
Concentration:	N/A
Conjugation:	Unconjugated
Storage:	Original vial: at least one year at 4° - 8°C from date of delivery. Minimize repeated thawing and freezing of the antiserum by freezing aliquots at -20°C or below.
Database Link:	P01263
Background:	Calcitonin is a 32 amino acid peptide hormone that defines the calcitonin-like protein family. It is formed by the proteolytic cleavage of a larger prepropeptide, which is the product of the CALC1 gene and secreted by parafollicular cells of the thyroid gland in humans, and in the ultimopharyngeal body in animals. The hormone participates in calcium and phosphorus metabolism by reducing blood calcium, and counteracts the effects of parathyroid hormone and Vitamin D3. This antibody was generated by immunization of rabbits with Calcitonin coupled to a carrier protein.



[View online »](#)

Product images:



Typical titration curve of Calcitonin (salmon I) in a competitive ELISA with this antibody