

Product datasheet for **TA363875**

IgG (Immunoglobulin G, light chain), mouse anti porcine, clone PHE425

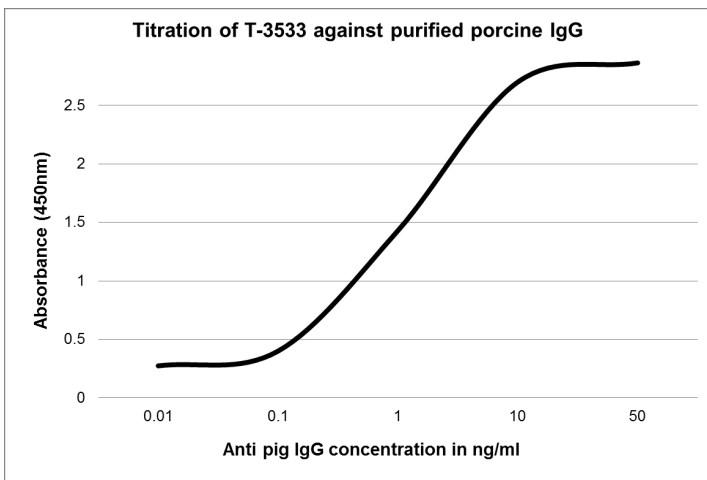
Product data:

Product Type:	Secondary Antibodies
Product Name:	IgG (Immunoglobulin G, light chain), mouse anti porcine, clone PHE425
Clone Name:	PHE425
Applications:	ELISA, IHC, WB
Recommended Dilution:	Tested for immunohistochemistry (IHC), ELISA and Western Blot, other applications not yet tested. Approximate working dilutions: IHC, frozen sections: 0.1µg/ml (1:2000) IHC, paraffin sections: 0.25µg/ml (1:800); Proteinase K pretreatment for antigen retrieval is recommended. Western Blot: 0.05 – 0.5µg/ml. ELISA: 20 - 50ng/ml (EC50 of 1ng/ml illustrated below) Optimal dilutions should be determined by the end user.
Reactivity:	Porcine
Host:	Mouse
Immunogen:	Porcine liver extract.
Isotype:	IgG1
Formulation:	Affinity purified from cell culture supernatant, lyophilized. Reconstitute by adding 0.5ml distilled water. This stock solution contains 0.2mg/ml IgG, phosphate buffered saline pH 7.2 (PBS), 5mg/ml bovine serum albumin (BSA) as a stabilizer and 0.05% (v/v) Kathon CG as a preservative.
Concentration:	N/A
Conjugation:	Unconjugated
Storage:	Original vial: 1 year at 4° - 8°C. Avoid repeated thawing and freezing of the reconstituted antibody.

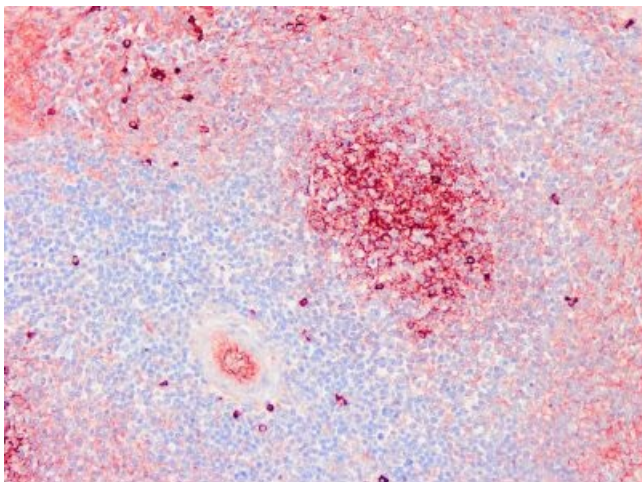


[View online »](#)

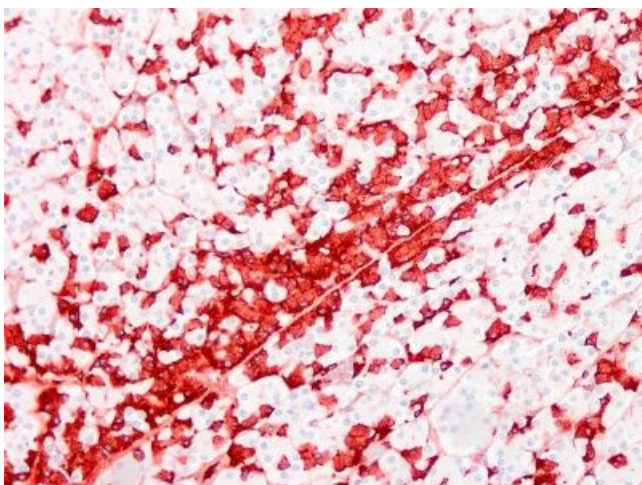
Product images:



Performance of monoclonal antibody PHE425 in ELISA



TA363875, Clone PHE425, swine spleen, paraffin section



TA363875, Clone PHE425, swine pancreas, paraffin section