

## Product datasheet for **TA363874**

### Reticular Fibroblasts and Reticular Fibres Mouse Monoclonal Antibody [Clone ID: PRF414]

#### Product data:

Product Type:	Primary Antibodies
Clone Name:	PRF414
Applications:	ELISA, IHC
Recommended Dilution:	Tested for immunohistochemistry (IHC), other applications not yet tested. Approximate working dilutions: IHC, frozen sections: 0.5µg/ml (1:800) IHC, paraffin sections: 2µg/ml (1:200) Proteinase K pretreatment for antigen retrieval is recommended. Optimal dilutions should be determined by the end user.
Reactivity:	Porcine
Host:	Mouse
Isotype:	IgG1
Clonality:	Monoclonal
Immunogen:	Porcine lung extract.
Specificity:	Pig: reticular fibres Other species: Does not react with human tissue.

**Epitope:** The epitope has not been characterized.

**Distribution:** Tissue sections: In all organs tested so far, the antigen is expressed in connective tissues which form a supporting network between parenchymal cells. Thus, the supportive mesenchymal structures of vessels and the capillary structure of tissues can be studied. In the spleen, a very clear delineation of red and white pulp is obtained. Capsule, sinuses, follicles, paracortex and medullary cords are also clearly delineated in lymph nodes.

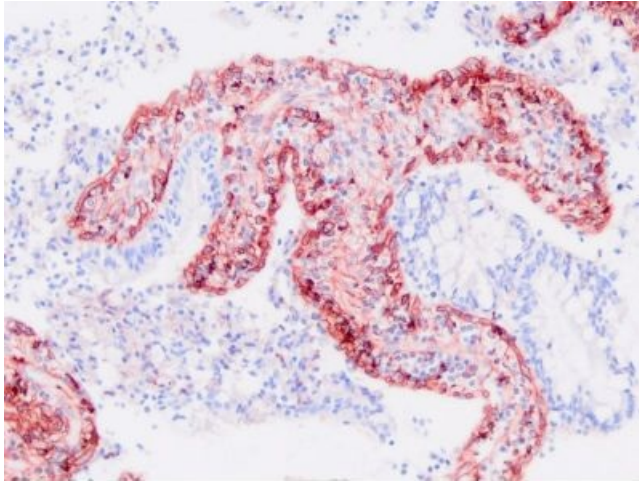
Formulation:	Affinity purified from cell culture supernatant, lyophilized. Reconstitute by adding 0.5ml distilled water. This stock solution contains 0.4mg/ml IgG, phosphate buffered saline pH 7.2 (PBS), 5mg/ml bovine serum albumin (BSA) as a stabilizer and 0.05% (v/v) Kathon CG as a preservative.
Concentration:	N/A
Conjugation:	Unconjugated
Storage:	Original vial: 1 year at 4° - 8°C. Avoid repeated thawing and freezing of the reconstituted antibody.



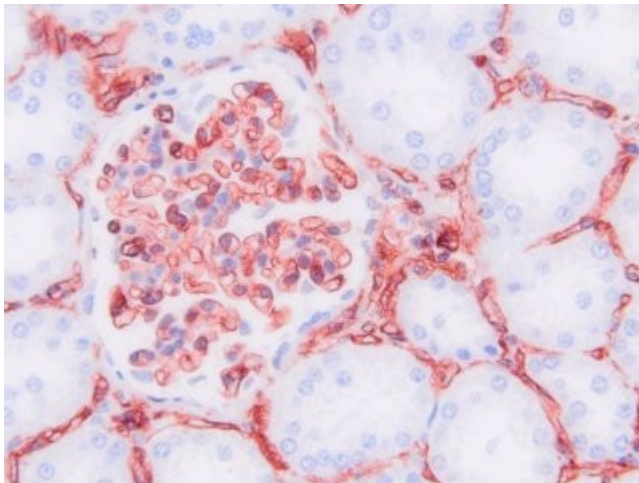
[View online »](#)

**Background:**

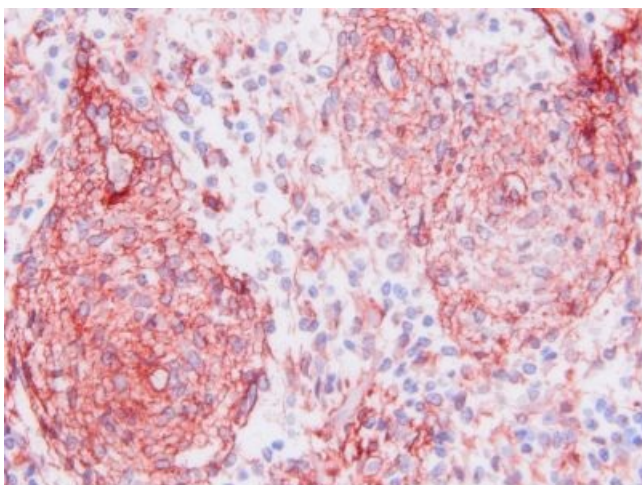
Monoclonal antibody PRF414 detects an antigen present in, and produced by, reticular fibroblasts. The antibody is useful to stain the microanatomy of various organs, in particular the connective tissue framework in lymphoid organs. The reticular fibres are composed of collagen fibrils, predominantly type III collagen. This antibody was produced serum-free, without fetal calf serum.

**Product images:**

TA363874, Clone PRF414, swine jejunum, paraffin section



TA363874, Clone PRF414, swine kidney, paraffin section



TA363874, Clone PRF414, swine spleen, paraffin section