

## Product datasheet for **TA363872**

### LCN2 Mouse Monoclonal Antibody [Clone ID: PNL110]

#### Product data:

**Product Type:** Primary Antibodies

**Clone Name:** PNL110

**Applications:** ELISA, IHC, WB

**Recommended Dilution:** Each lot of this antibody has been tested and validated for immunohistochemistry on formalin-fixed paraffin sections (**IHC-p**). **Approximate working dilution for IHC:** Paraffin sections: 4µg/ml (1:100); microwave or Proteinase K pretreatment for antigen retrieval is recommended.

**Suggested positive control:** swine spleen.

**Reactivity:** Porcine

**Host:** Mouse

**Isotype:** IgG2b

**Clonality:** Monoclonal

**Immunogen:** Porcine neutrophil extract.

**Specificity:** **Pig:** neutrophils Other: does not react with human neutrophils

**Epitope:** The antibody reacts with formaldehyde-treated recombinant porcine Lipocalin 2, the epitope has not been further characterized.

**Distribution:** Tissue sections: Porcine LCN2 (F1RRX1) is found on neutrophils in all organs tested so far (stomach, ileum, liver, spleen, lung, kidney).

**Formulation:** Phosphate buffered saline pH 7.2 (PBS) with 6mg/ml BSA as a stabilizer and 0.05% (v/v) Kathon CG as a preservative.

**State:** Lyophilized Affinity purified from cell culture supernatant, packaged under nitrogen.

**Reconstitution Method:** Restore by adding 0.5 ml distilled water to a concentration of 0.4 mg/ml IgG

**Concentration:** N/A

**Conjugation:** Unconjugated

**Storage:** Original vial: 1 year at 4° - 8°C. Minimize repeated thawing and freezing of the stock solution.



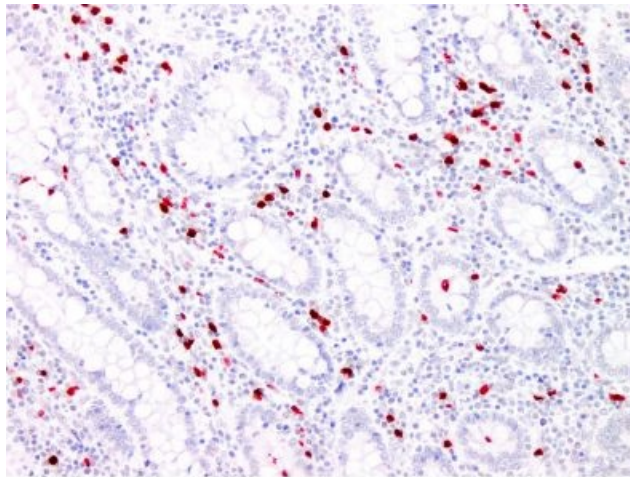
[View online »](#)

Database Link: [F1RRX1](#)

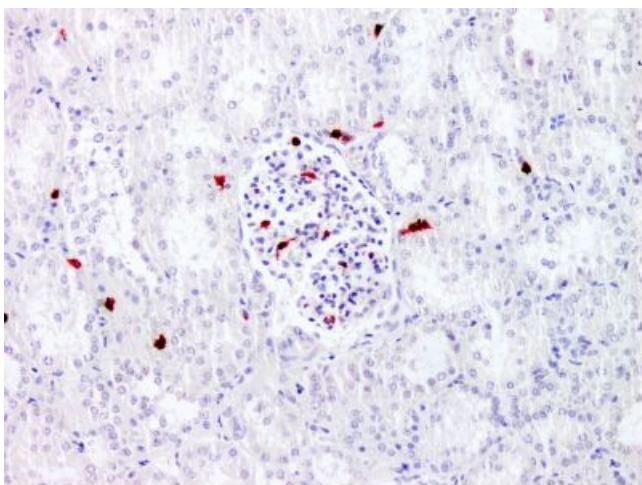
**Background:** Monoclonal antibody PNL110 recognizes the formaldehyde-derived form of porcine Lipocalin 2 (LCN2), also known as Neutrophil Gelatinase-Associated Lipocalin (NGAL). LCN2 is a 25kDa protein belonging to the lipocalin superfamily. Porcine LCN2 (F1RRX1) contains 15 lysine residues which are available for chemical modification with formaldehyde. Neutrophils are the main source of plasma LCN2. Mature peripheral neutrophils store the protein in granules. LCN2 functions as an inflammatory modulator of the innate immune system by binding high-affinity iron-chelating compounds secreted by microorganisms (siderophores). This reduces iron available to microorganisms and inhibits their growth, for example also in the jejunum after pathogenic bacterial infection. Diagnostically, LCN2 was found to have its gene strongly upregulated and its protein synthesis induced after acute kidney injury. LCN2 is actually detected in the blood and urine after acute kidney injury and may represent a valuable biomarker that correlates with the severity of renal impairment in acute and chronic conditions. This antibody was produced in vitro in bioreactors.

**Synonyms:** 24p3; HNL; Lipocalin-2; MSFI; NGAL; OTTHUMP00000022240; p25; siderocalin

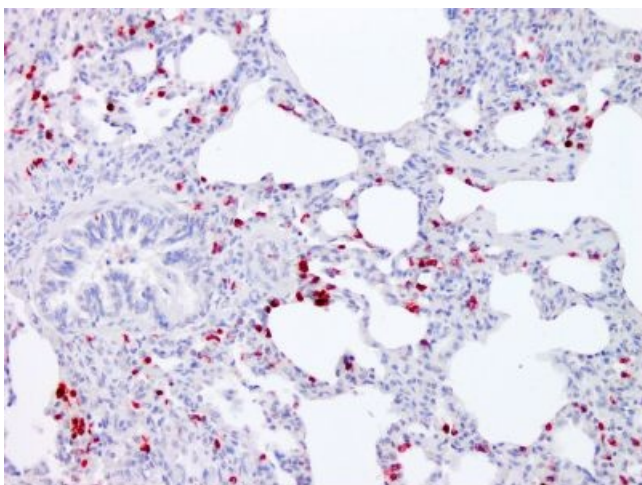
**Product images:**



TA363872, Clone PNL110, swine ileum, paraffin section



TA363872, Clone PNL110, swine kidney, paraffin section



TA363872, Clone PNL110, swine lung, paraffin section