

Product datasheet for **TA363871**

ALB Monoclonal Antibody [Clone ID: PEM311 Biotin]

Product data:

Product Type:	Primary Antibodies
Clone Name:	PEM311 Biotin
Applications:	ELISA, IHC
Recommended Dilution:	Each lot of this antibody has been tested and validated for immunohistochemistry (IHC), Western Blot and ELISA, other applications not yet tested. Approximate working dilutions: IHC, frozen sections: not tested IHC, paraffin sections: 0.1µg/ml (1:2000); Proteinase K pretreatment for antigen retrieval is recommended (BMA product number T-3401) Western Blot: 0.25µg/ml
Reactivity:	Pig
Clonality:	Monoclonal
Immunogen:	Porcine lung extract.
Specificity:	Porcine Albumin Other species: Western Blot analysis indicates no detectable reactivity with human, horse, rat, goat, bovine, sheep or donkey albumin. Titration of the antibody against purified porcine, human or rabbit albumin confirms minimal cross-reactivity.
	Epitope: Immunoprecipitation and subsequent identification by nanoLC- ESI-MS/MS identified the antigen as porcine albumin. The epitope has not been further characterized.
	Distribution: Tissue sections: Hepatocytes of the liver and some exocrine glandular cells of the pancreas are stained positive, and albumin in the blood vessels of all organs.
Formulation:	Affinity purified from cell culture supernatant, biotinylated, lyophilized. Reconstitute by adding 0.5ml distilled water. This stock solution contains 0.2mg/ml IgG, phosphate buffered saline pH 7.2 (PBS), 5mg/ml bovine serum albumin (BSA) as a stabilizer and 0.05% (v/v) Kathon CG as a preservative.
Concentration:	N/A
Conjugation:	Biotin
Storage:	Original vial: 1 year at 4° - 8°C. Avoid repeated thawing and freezing of the reconstituted antibody.
Database Link:	Entrez Gene 396960 Pig P08835



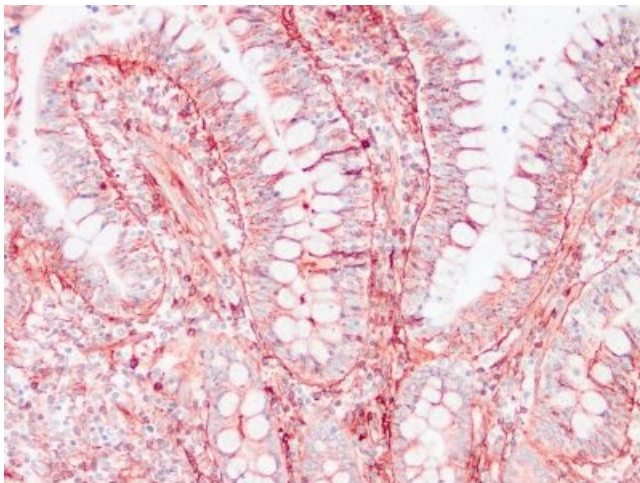
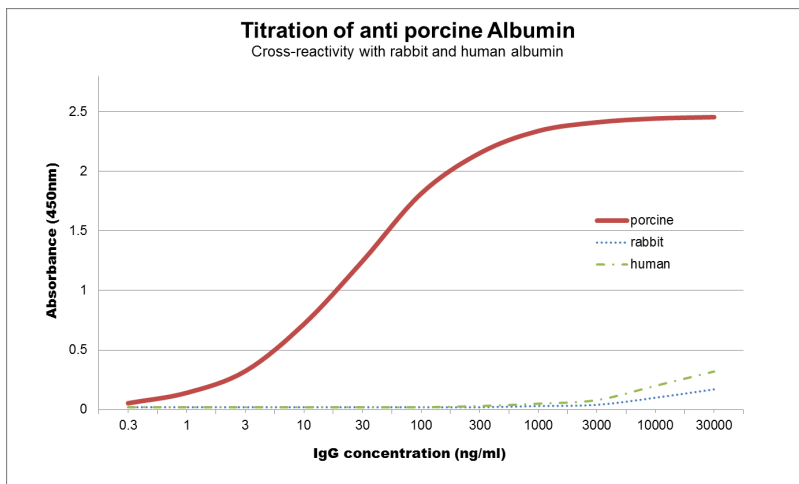
[View online »](#)

Background:

Monoclonal antibody PEM311 reacts specifically with pig albumin, not with albumin from other mammalian species. Albumin has been listed as a stem cell marker for hepatocytes by the U.S. National Institutes of Health. Serum albumin is a globular non-glycosylated protein of 65-70kDa molecular weight, well water-soluble and heat-intolerant. It mainly functions as a regulator of colloidal osmotic pressure and as a transport protein for molecules that are poorly water-soluble, and for zinc. Serum albumin is the most abundant of all plasma proteins. Albumin consists of three homologous domains that mainly contain alpha-helices, porcine albumin contains seventeen disulfide bonds altogether. This antibody was produced serum-free, without fetal calf serum.

Synonyms:

albumin; DKFZp779N1935; PRO0883; PRO0903; PRO1341

Product images:

TA363871, Clone PEM311 Biotin, swine ileum, paraffin section