

Product datasheet for **TA363870**

CRP Mouse Monoclonal Antibody [Clone ID: PC1 Biotin]

Product data:

Product Type:	Primary Antibodies
Clone Name:	PC1 Biotin
Applications:	ELISA, IHC
Recommended Dilution:	Tested for ELISA and Western Blot. Approximate working dilutions: ELISA: 0.5µg/ml Western Blot: 1µg/ml Optimal dilutions should be determined by the end user.
Reactivity:	Porcine
Host:	Mouse
Isotype:	IgG1
Clonality:	Monoclonal
Immunogen:	Purified porcine CRP
Specificity:	Pig: CRP Other species: not yet tested.
	Epitope: Porcine CRP, The epitope has not been characterized
Formulation:	Affinity purified, biotinylated, lyophilized. Reconstitute by adding 0.5ml distilled water. This stock solution contains 0.5mg/ml IgG, phosphate buffered saline pH 7.2 (PBS), 5mg/ml bovine serum albumin (BSA) as a stabilizer and 0.05% (v/v) Kathon CG as a preservative.
Concentration:	N/A
Conjugation:	Biotin
Storage:	Original vial: 6 months at 4° - 8°C, 1 year at -20°C. Avoid repeated thawing and freezing.
Database Link:	O19062



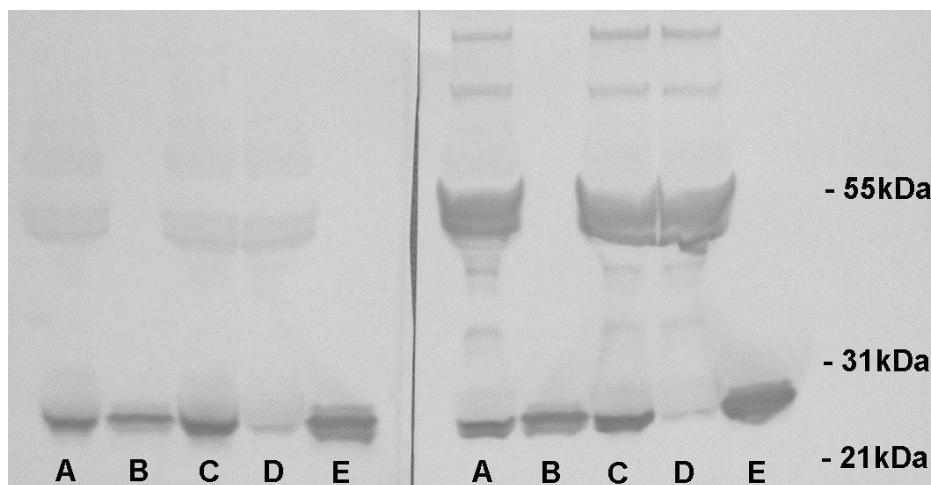
[View online »](#)

Background:

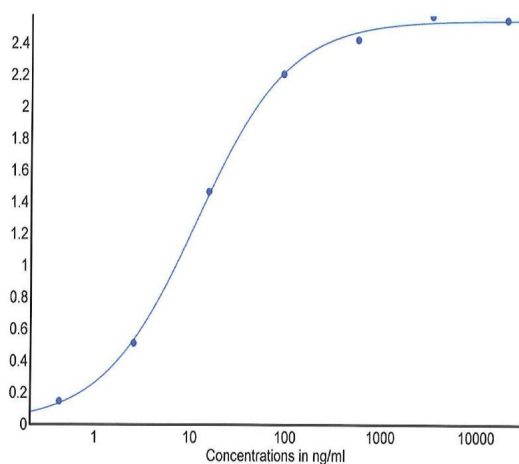
Monoclonal antibody PC1 recognizes porcine C-reactive protein (CRP). CRP belongs to a highly conserved phylogenetically ancient family called pentraxins, which have five identical non-covalently linked subunits. Native CRP in its pentameric form has a molecular weight of approximately 115kDa. As in humans, CRP is an acute-phase protein in pigs. It has been suspected to be directly involved in the pathogenesis of ischemic diseases through the activation of the complement system. CRP levels have been measured in porcine serum. Median levels in specific pathogen-free animals were 5µg/ml and increased 40- to 70-fold due to inflammation or infection with *Mycoplasma hyopneumoniae*. Monoclonal antibody PC1 was generated against purified porcine CRP. This antibody was produced serum-free, without fetal calf serum.

Synonyms:

MGC88244; MGC149895; PTX1

Product images:


Western Blot of porcine plasma and poCRP with monoclonal antibody PC1. Porcine plasma was diluted 1/25 and spiked with 0.08 or 0.3µg purified porcine CRP, respectively. PAGE was performed under reducing and denaturing conditions (10-20% gel), blotted (nitrocellulose) and developed with antibody PC1 (left) or competitor's monoclonal antibody (right). Lane A: plasma spiked with 0.08µg poCRP; lane B: 0.08µg poCRP; lane C: plasma spiked with 0.3µg poCRP; lane D: plasma; lane E: 0.3µg poCRP. Antibody PC1 barely reacts with the 50-55kDa bands visible on the right, presumably immunoglobulin heavy chains. Gel was slightly overloaded to allow visibility of CRP band in plasma. ©BMA Biomedicals



Direct ELISA with biotinylated antibody PC1: Titration against immobilized poCRP. Coating with 0.3µg/ml poCRP and blocking with 0.1% casein (BMA #3403) gave an EC50 for Lot 01PB1519 of 11.4ng/ml. ©BMA Biomedicals