

Product datasheet for **TA363866**

Neutrophils Mouse Monoclonal Antibody [Clone ID: PM1 Biotin]

Product data:

Product Type:	Primary Antibodies
Clone Name:	PM1 Biotin
Applications:	IHC
Recommended Dilution:	Tested for immunohistochemistry (IHC). Approximate working dilutions: IHC, frozen sections: 0.1µg/ml (1:4000) IHC, paraffin sections: 1µg/ml (1:400) microwave pretreatment for antigen retrieval is recommended. Optimal dilutions should be determined by the end user.
Reactivity:	Porcine
Host:	Mouse
Isotype:	IgG1
Clonality:	Monoclonal
Immunogen:	Porcine lung extract
Specificity:	Pig: Neutrophils Other species: reacts with human neutrophils.

Epitope: The epitope has not been characterized

Distribution: Tissue sections: The antigen of 21kDa is associated with neutrophils in various swine tissues, e.g. in the red pulp of the spleen, and also with neutrophils in blood smears.

Formulation: Affinity purified, biotinylated, lyophilized; reconstitute by adding 0.5ml distilled water. This stock solution contains 0.4mg/ml IgG, phosphate buffered saline pH 7.2 (PBS), 5mg/ml bovine serum albumin (BSA) as a stabilizer and 0.05% Kathon CG as a preservative.

Concentration: N/A

Conjugation: Biotin

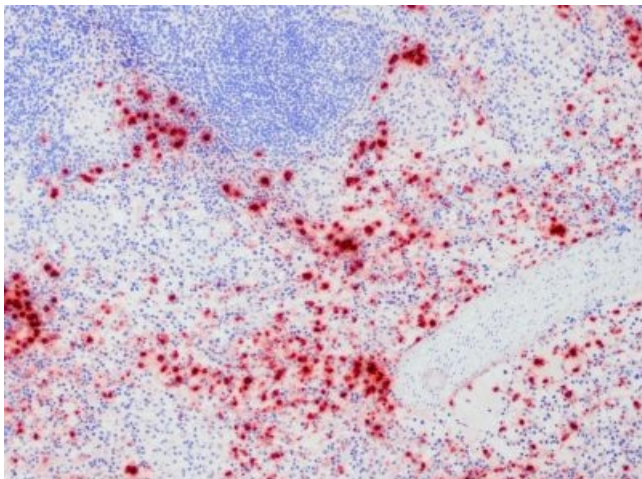
Storage: Original vial: 1 year at 4° - 8°C. Stock solution or aliquots thereof: 1 year at -20°C. Avoid repeated thawing and freezing.

Background: Monoclonal antibody PM1 recognizes neutrophils in various organs and in blood smears. The antigen is located in both the membrane and the cytoplasm. Western Blotting of kidney or spleen extracts reveals a band at 21kDa after SDS-PAGE under non-reducing conditions. No band is visible under reducing conditions.



[View online »](#)

Product images:



TA363866, Clone PM1 Biotin, swine spleen, frozen section