

Product datasheet for **TA363863**

Follicular Dendritic Cells Mouse Monoclonal Antibody [Clone ID: Ki-M9R Biotin]

Product data:

Product Type:	Primary Antibodies
Clone Name:	Ki-M9R Biotin
Applications:	IHC
Recommended Dilution:	Tested for immunohistochemistry (IHC). Approximate working dilution for IHC: Frozen sections: 2.5µg/ml (1:400) Paraffin sections: does not react on routinely processed paraffin sections Optimal dilutions should be determined by the end user. Suggested positive control: Rat spleen
Reactivity:	Rat
Host:	Mouse
Clonality:	Monoclonal
Immunogen:	Rat peritoneal macrophages.
Specificity:	Rat: subpopulation of macrophages. Other species: not tested

Epitope: Ki-M9R detects a 49kDa cytoplasmic antigen. The epitope has not been further characterized.

Distribution: Isolated cells: Ki-M9R is negative with all peripheral blood cells and cells of the bone marrow or peritoneal cavity. Tissue sections: Ki-M9R specifically recognises antigen trapping macrophages of the B-cell system such as sinus lining cells and dendritic reticulum cells. It is also positive on splenic metallophil. Macrophages in T-cell areas are negative with Ki-M9R. None of the macrophages in non-lymphoid organs are detected by Ki-M9R. No cross-reactivity was found with other cell types at different tissue sites except with hepatic sinusoids. In vivo administration of Ki-M9R reveals a direct cytotoxicity to, and the elimination of, Ki-M9R positive cells. Animals survive this treatment.

Formulation:	Affinity purified, biotinylated, lyophilized. Reconstitute by adding 0.5ml distilled water. This stock solution contains 1mg/ml IgG, phosphate buffered saline pH 7.2 (PBS), 5mg/ml bovine serum albumin (BSA) as a stabilizer and 0.05% (v/v) Kathon CG as a preservative.
Concentration:	N/A
Conjugation:	Biotin

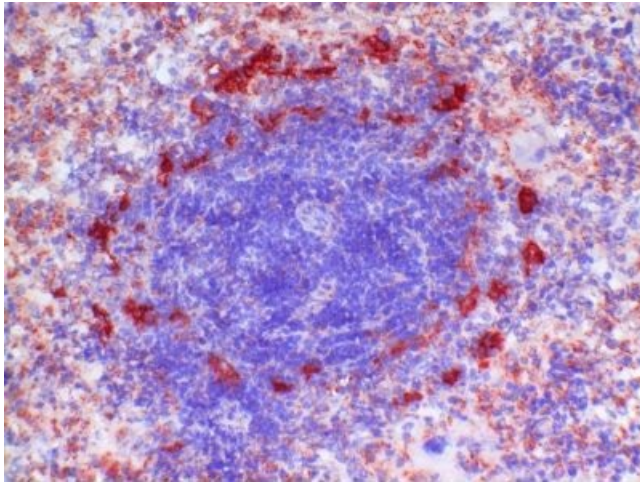


[View online »](#)

Storage: Original vial: 1 year at 4° - 8°C. Stock solution or aliquots thereof: 1 year at -20°C. Avoid repeated thawing and freezing.

Background: Monoclonal Antibody Ki-M9R detects a cytoplasmic antigen in accessory B-cells which are involved in antigen trapping reactions. The antigen is only expressed in sinus lining cells of lymph nodes, in follicular dendritic cells of germinal centres, and in metallophilic cells of the spleen. Thus it seems that the antigen is associated with antigen processing cells that migrate to germinal centres to develop into follicular dendritic cells.

Product images:



TA363863, Clone Ki-M9R Biotin, rat spleen, frozen section