

Product datasheet for **TA363861**

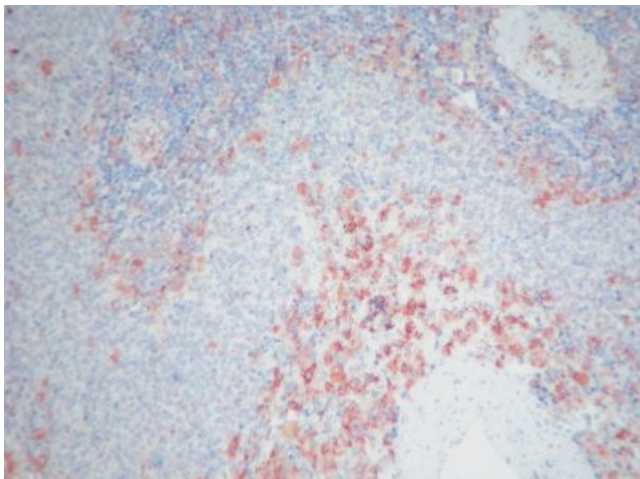
P4hb Mouse Monoclonal Antibody [Clone ID: 6-9H6]

Product data:

Product Type:	Primary Antibodies
Clone Name:	6-9H6
Applications:	ELISA, IHC
Recommended Dilution:	Tested for immunohistochemistry (IHC); has been described to work in ELISA, Western Blot . Approximate working dilution for IHC: Frozen sections: 1µg/ml (1:200) Paraffin sections: 10µg/ml (1:20); microwave pretreatment for antigen retrieval is recommended. Optimal dilutions should be determined by the end user. Suggested positive control: Rat skin.
Reactivity:	Rat
Host:	Mouse
Clonality:	Monoclonal
Specificity:	Epitope: Prolyl-4-Hydroxylase beta. The epitope is not further characterized.
Formulation:	Affinity purified, lyophilized Reconstitute by adding 0.5ml distilled water. This stock solution contains 0.2mg/ml IgG, phosphate buffered saline pH 7.2 (PBS), 5mg/ml bovine serum albumin (BSA) as a stabilizer and 0.1% Kathon as a preservative.
Concentration:	N/A
Conjugation:	Unconjugated
Storage:	Original vial: 1 year at 4° - 8°C. Stock solution or aliquots thereof: 1 year at -20°C. Avoid repeated thawing and freezing.
Gene Name:	prolyl 4-hydroxylase subunit beta
Database Link:	Entrez Gene 25506 Rat P04785
Background:	Collagen prolyl 4-hydroxylases (P4H) play an essential role in the synthesis of all collagens. Two alpha and two beta subunits assemble into P4H tetramers in which protein disulfide isomerase (PDI) acts as the beta subunit. Clone 6-9H6 reacts with the beta subunit of rat P4H specifically found in the skin of newborn rat.
Synonyms:	DSI; ERBA2L; GIT; P4Hbeta; p55; PDI; PDIA1; PHDB; PO4DB; PO4HB; PROHB



[View online »](#)

Product images:

TA363861, Clone 6-9H6, rat spleen, paraffin section