

Product datasheet for **TA363859**

Macrophages Mouse Monoclonal Antibody [Clone ID: RM-1 Biotin]

Product data:

| | |
|-----------------------|---|
| Product Type: | Primary Antibodies |
| Clone Name: | RM-1 Biotin |
| Applications: | IHC |
| Recommended Dilution: | Tested for immunohistochemistry (IHC); has been described to work in FACS. Approximate working dilution for IHC: Frozen sections: 2µg/ml (1:100) Paraffin sections: 20µg/ml (1:10); microwave pretreatment for antigen retrieval is recommended. Optimal dilutions should be determined by the end user. Suggested positive control: Rat spleen |
| Reactivity: | Rat |
| Host: | Mouse |
| Clonality: | Monoclonal |
| Immunogen: | Rat peritoneal macrophages |
| Specificity: | Rat: monocytes, subpopulation of macrophages, interdigitating cells. Other species: not tested |

Epitope: The antigen is localized on the surface of cells. It is stable to 2% periodate-lysine-paraformaldehyde fixation. The epitope has not been further characterized.

Distribution: Isolated cells: Positive on monocytes in peripheral blood. Positive on 20-30% of peritoneal cells, increasing to 30-40% after thioglycolate stimulation. Tissue sections: The antigen is found on a subpopulation of most tissue fixed macrophages. It is quite predominant on red pulp macrophages and interdigitating cells in the outer periarteriolar lymphatic sheath of the spleen, the inner border of marginal sinus of lymph nodes, and alveolar macrophages. Langerhans cells of the skin and twisted spindle-shaped cells of the omentum are detected by the antibody. It is absent from sinusoidal endothelial cells and parenchymal cells.

| | |
|----------------|---|
| Formulation: | Affinity purified, biotinylated, lyophilized. Reconstitute by adding 0.5ml distilled water. This stock solution contains 0.2mg/ml IgG, phosphate buffered saline pH 7.2 (PBS), 5mg/ml bovine serum albumin (BSA) as a stabilizer and 0.05% (v/v) Kathon CG as a preservative. |
| Concentration: | N/A |
| Conjugation: | Biotin |

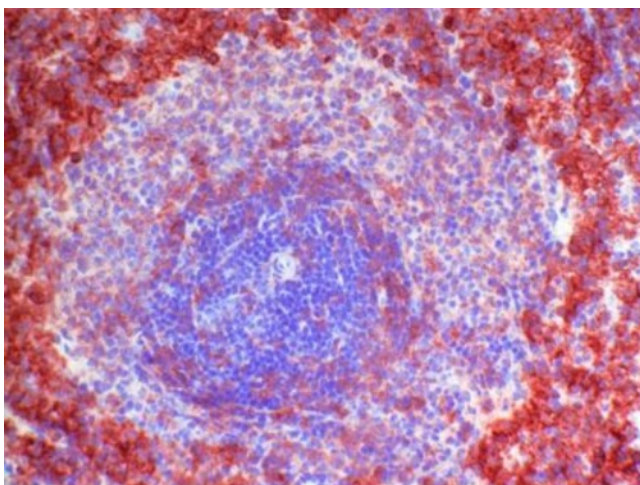


[View online »](#)

Storage: Original vial: 1 year at 4° - 8°C. Stock solution or aliquots thereof: 1 year at -20°C. Avoid repeated thawing and freezing.

Background: Monoclonal Antibody RM-1 recognizes a surface antigen of unknown function on monocytes, macrophages, interdigitating cells and their in vitro equivalents. The RM-1 antigen is apparently constitutively expressed and can be detected early in the development of macrophages and dendritic cells.

Product images:



TA363859, Clone RM-1 Biotin, rat spleen, frozen section