

Product datasheet for **TA363858**

Clec4d Mouse Monoclonal Antibody [Clone ID: WEN42 Biotin]

Product data:

Product Type:	Primary Antibodies
Clone Name:	WEN42 Biotin
Applications:	IHC
Recommended Dilution:	Each lot of this antibody has been tested and validated for immunohistochemistry (IHC); the antibody has been described to work in FACS and Western blots. Approximate working dilution for IHC: Frozen sections: 1µg/ml (1:400) Paraffin sections: 10µg/ml (1:40); microwave pretreatment for antigen retrieval is recommended. Optimal dilutions should be determined by the end user. Suggested positive control: rat spleen.
Reactivity:	Rat
Host:	Mouse
Isotype:	IgG2a
Clonality:	Monoclonal
Immunogen:	BWZ cells expressing a chimeric MCL construct.
Specificity:	Rat: monocytes and neutrophils, peritoneal macrophages. Other: does not react with swine tissue.

Epitope: The antigen is located in the extracellular domain of MCL.

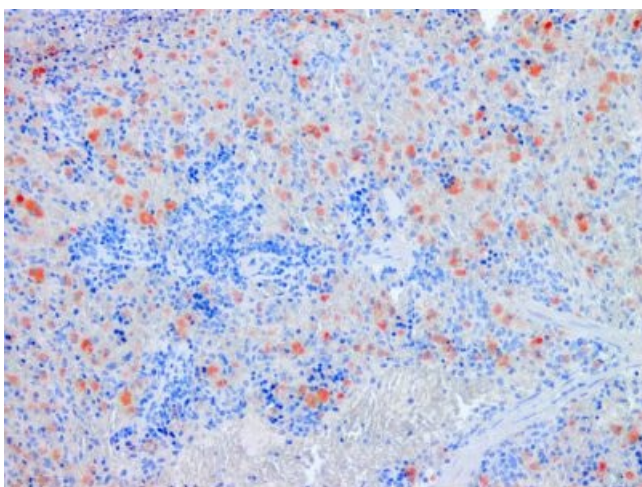
Distribution: Isolated cells: The antigen can be found on neutrophils and monocytes, as well as on resident peritoneal macrophages. It is absent from other blood cells, i.e from T or B lymphocytes or NK cells. Tissue sections:, Distinct staining can be observed in the marginal zone, probably of marginal zone macrophages. Little or no staining can be observed in the white pulp.

Formulation:	Affinity purified from cell culture supernatant, biotinylated, lyophilized, packaged under nitrogen. Reconstitute by adding 0.5ml distilled water. This stock solution contains 0.4mg/ml IgG, phosphate buffered saline pH 7.2 (PBS), 5mg/ml bovine serum albumin (BSA) as a stabilizer and 0.05% (v/v) Kathon CG as a preservative.
Concentration:	N/A
Conjugation:	Biotin

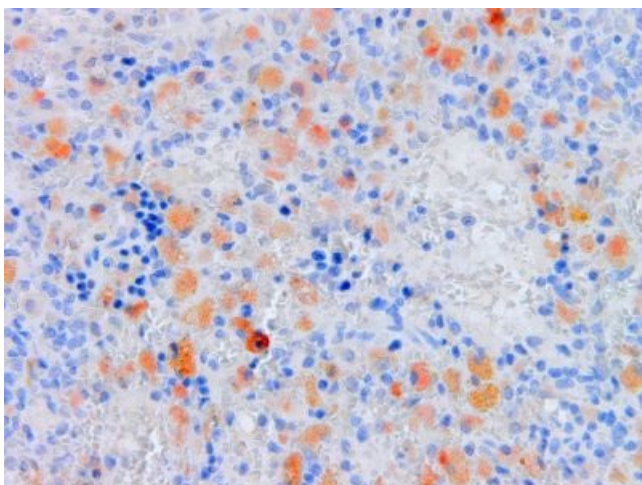


[View online »](#)

Storage:	Original vial: 1 year at 4° - 8°C. Minimize repeated thawing and freezing of the stock solution.
Gene Name:	C-type lectin domain family 4, member D
Database Link:	Entrez Gene 362432 Rat Q69FH1
Background:	Rat macrophage C-type lectin (MCL; CLEC4D, CLECSF8) is expressed on monocytes and neutrophils as well as several tissue-resident macrophage populations. MCL associates with Macrophage Inducible C-type Lectin (Mincle) to form a heterodimeric functional surface receptor that signals through FcεR1γ and mediates phagocytosis upon receptor engagement. MCL, together with Mincle, is encoded by the antigen presenting cell lectin-like receptor gene complex (APLEC). The APLEC gene region is associated with rheumatoid arthritis in man and experimentally induced autoimmunity in rodents. This antibody was produced in vitro from cell culture supernatant.
Synonyms:	CLEC-6; CLEC6; CLECSF8; MCL; MGC40078; Mpcl

Product images:

TA363858, Clone WEN42 Biotin, rat spleen, paraffin section



TA363858, Clone WEN42 Biotin, rat spleen,
paraffin section