

## Product datasheet for **TA363857**

### **Klrb1b Mouse Monoclonal Antibody [Clone ID: 28764]**

#### **Product data:**

<b>Product Type:</b>	Primary Antibodies
<b>Clone Name:</b>	28764
<b>Applications:</b>	IHC
<b>Recommended Dilution:</b>	Tested for immunohistochemistry (IHC); has been described to work in FACS. Approximate working dilution for IHC: Frozen sections: 0.1 µg/ml (1:4000) Paraffin sections: does not react on routinely processed paraffin sections. Optimal dilutions should be determined by the end user. Suggested positive control: rat spleen.
<b>Reactivity:</b>	Rat
<b>Host:</b>	Mouse
<b>Clonality:</b>	Monoclonal
<b>Immunogen:</b>	Purified splenic NK cells from the LEW rat strain.
<b>Specificity:</b>	Rat: NK cells and large granular lymphocytes Other species: not tested

**Epitope:** The epitope has not been further characterized.

**Distribution:** Isolated Cells: The antigen is described to be present on NK cells and large granular lymphocytes. Tissue Sections: The antigen is expressed on CD161 positive cells in various tissues, e.g. in rat spleen. There is a strong staining on cells in the red pulp, whereas there are only few cells with weak staining in the white pulp.

**Formulation:** Affinity purified, lyophilized Reconstitute by adding 0.5ml distilled water. This stock solution contains 0.4mg/ml IgG, phosphate buffered saline pH 7.2 (PBS), 5mg/ml bovine serum albumin (BSA) as a stabilizer and 0.09% sodium azide as a preservative.

**Concentration:** N/A

**Conjugation:** Unconjugated

**Storage:** Original vial: 1 year at 4° - 8°C. Stock solution or aliquots thereof: 1 year at -20°C. Avoid repeated thawing and freezing.

**Gene Name:** killer cell lectin-like receptor subfamily B member 1B

**Database Link:** [Entrez Gene 25192 Rat A4KWA1](#)



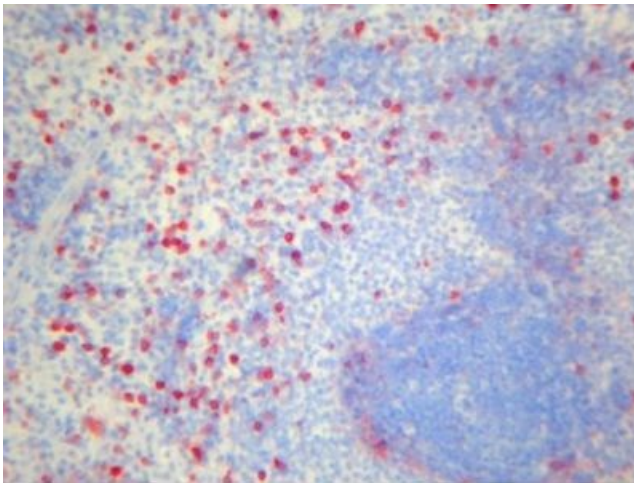
[View online »](#)

**Background:**

Monoclonal antibody 10-78 recognizes a 60kDa disulfide linked homodimer known as NKR-P1 or KLRB (Killer cell Lectin-like Receptor, subfamily B). This type II transmembrane glycoprotein of the C-type lectin superfamily is found on rat NK cells and large granular lymphocytes. Rat NKR-P1 comes in three highly related homologues (NKR-P1A, NKR-P1B and NKR-P1B\*), similar to the three homologues found in mice (KLRB1A/NKR-P1A, KLRB1B/NKR-P1B and KLRB1C/NKR-P1C) while only one human homologue (KLRB1, NKR-P1A or CD161) has been described. NKR-P1 seems to play an important role in the cytotoxic function of natural killer cells.

**Synonyms:**

Klr1d; Ly55b; Ly55d; MGC163757; MGC163759; NKR-P1B; Nkr-p1b; NKR-P1D; Nkrp1-b; Nkrp1b; Nkrp1d

**Product images:**

TA363857, Clone 10-78, rat spleen, frozen section