

## Product datasheet for **TA363848**

### Cd163 Mouse Monoclonal Antibody [Clone ID: ED2]

#### Product data:

Product Type:	Primary Antibodies
Clone Name:	ED2
Applications:	IHC
Recommended Dilution:	Tested for immunohistochemistry (IHC); has been described to work in FACS, immunoprecipitation. Approximate working dilution for IHC: Frozen sections: 1µg/ml (1:1000) Paraffin sections: 20µg/ml (1:50 Proteinase K pretreatment for antigen retrieval is recommended Optimal dilutions should be determined by the end user. Suggested positive control: Rat spleen.
Reactivity:	Rat
Host:	Mouse
Isotype:	IgG1
Clonality:	Monoclonal
Immunogen:	Rat spleen cells.
Specificity:	Rat: macrophages. Other species: not tested

**Epitope:** The antigen has been described as CD163, epitope not further characterized.

**Distribution:** Isolated cells: Monocytes and dendritic cells harvested from spleen and lymph nodes, and granulocytes harvested from the peritoneal cavity are negative with ED 2.

**Formulation:** Affinity purified, liquid. Supplied as a 0.25ml solution. This stock solution contains 1mg/ml IgG, phosphate buffered saline pH 7.2 (PBS), no stabilizer and 0.09% sodium azide as a preservative.

**Concentration:** lot specific

**Conjugation:** Unconjugated

**Storage:** Stock solution or aliquots thereof: 1 year at -20°C. Avoid repeated thawing and freezing.

**Gene Name:** CD163 molecule

**Database Link:** [Entrez Gene 312701 Rat D3Z9U2](#)

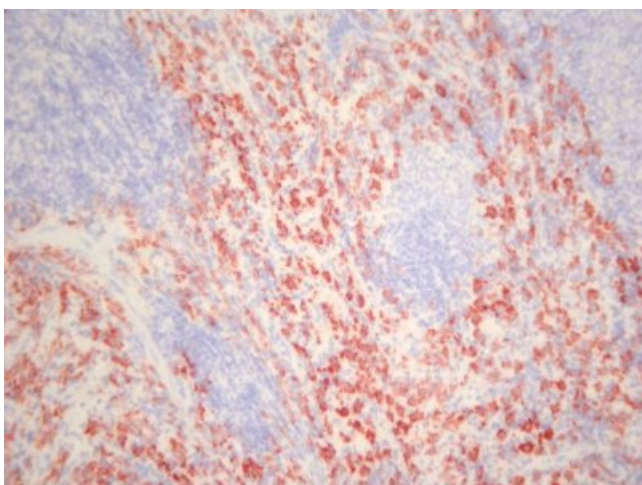


[View online »](#)

**Background:** Monoclonal antibody ED2 reacts with a membrane antigen (175, 160 and 95kDa) on resident rat macrophages. Monocytes, dendritic cells (spleen and lymph node), peritoneal granulocytes and other cell types are negative. ED2 discriminates between thymic cortical (positive for ED2) and medullary (negative for ED2) macrophages. It is useful to stain synovial lining cells and Kupffer cells in the liver. The antigen has recently been shown to be identical with CD163 (Polfliet, M.M.J. et al [2002], PhD Thesis, Vrije Universiteit, Amsterdam).

**Synonyms:** M130; MM130

**Product images:**



TA363848, Clone ED2, rat spleen, frozen section