

## Product datasheet for **TA363842**

### Cd44 Monoclonal Antibody [Clone ID: IM7.8.1]

#### Product data:

Product Type:	Primary Antibodies
Clone Name:	IM7.8.1
Applications:	ELISA, IHC
Recommended Dilution:	Tested for immunohistochemistry (IHC); has been described to work in FACS, for immunoprecipitation and ELISA.. Approximate working dilution for IHC: Frozen sections: 0.1µg/ml (1:4000) Paraffin sections: 10µg/ml (1:40); microwave pretreatment for antigen retrieval is recommended. Optimal dilutions should be determined by the end user. Suggested positive control: Mouse spleen.
Reactivity:	Mouse
Clonality:	Monoclonal
Immunogen:	Myeloid cell line M1 induced with Dexamethasone.
Specificity:	Mouse: B-cells, monocytes, macrophages, subset of thymocytes and peripheral T-cells. Other species: not tested
	<b>Epitope:</b> The antigen is CD44, also known as Pgp or Ly-24, a polymorphic glycoprotein. The epitope has not been further characterized.
	<b>Distribution:</b> Isolated Cells: The antigen is described to be present on B- cells, monocytes, macrophages, and a variable subset of thymocytes and peripheral T-cells. Tissue Sections: The antigen is expressed on CD44 positive cells in various tissues e.g. in mouse spleen. There is a strong staining in the red pulp, whereas the staining in the white pulp is weak.
Formulation:	Affinity purified, lyophilized Reconstitute by adding 0.5ml distilled water. This stock solution contains 0.4mg/ml IgG, phosphate buffered saline pH 7.2 (PBS), 5mg/ml bovine serum albumin (BSA) as a stabilizer and 0.09% sodium azide as a preservative.
Concentration:	N/A
Conjugation:	Unconjugated
Storage:	Original vial: 1 year at 4° - 8°C. Stock solution or aliquots thereof: 1 year at -20°C. Avoid repeated thawing and freezing.
Gene Name:	CD44 antigen



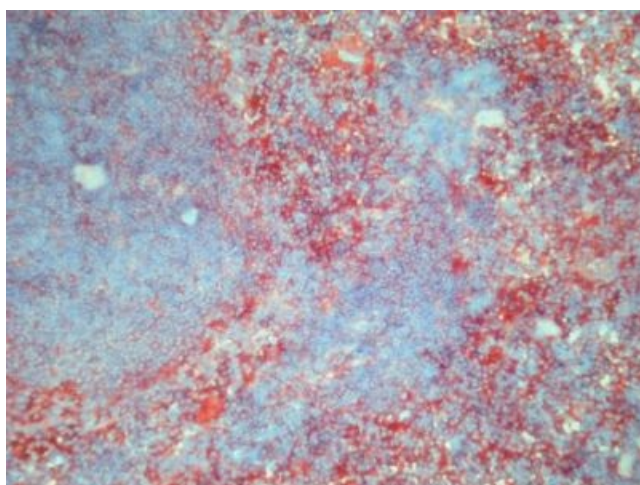
[View online »](#)

**Database Link:** [Entrez Gene 12505 Mouse P15379](#)

**Background:** Monoclonal antibody IM7.8.1 recognizes all isoforms of murine CD44 (Pgp, Ly-24), an 85kDa glycoprotein that is expressed on most cell types and tissues. CD44 is a member of the hyaladherin family of hyaluronan-binding proteins, with structural similarity to selectins. CD44 has been postulated to be involved in many cellular functions including leukocyte homing to lymphoid organs and to sites fo inflammation, cell adhesion and activation. Cells and tissue that lack CD44 include platelets, hepatocytes, certain lymphoid cell lines, cardiac muscle, kidney tubular epithelium, testis and portions of the skin.

**Synonyms:** CD44R; CDW44; CSPG8; ECMR-III; Epican; HCELL; HUTCH-I; IN; LHR; MC56; MDU2; MDU3; MGC10468; MIC4; MUTCH-I; PGP-1; PGP-I; Pgp1

**Product images:**



TA363842, Clone IM7.8.1, mouse spleen, frozen section