

Product datasheet for **TA363841**

Anpep Rat Monoclonal Antibody [Clone ID: ER-BMDM1]

Product data:

| | |
|-----------------------|--|
| Product Type: | Primary Antibodies |
| Clone Name: | ER-BMDM1 |
| Applications: | IHC |
| Recommended Dilution: | Tested for immunohistochemistry (IHC); has been described to work in FACS. Approximate working dilution for IHC: Frozen sections: 1µg/ml (1:200) Paraffin sections: 40µg/ml (1:5); pretreatment not necessary. Optimal dilutions should be determined by the end user. Suggested positive control: Mouse spleen. |
| Reactivity: | Mouse, Human |
| Host: | Rat |
| Isotype: | IgG2a |
| Clonality: | Monoclonal |
| Immunogen: | Cultured mouse monocytes, day 7 |
| Specificity: | Mouse: Mature macrophages. Other species: not tested. |

Epitope: The antigen is a 160kDa membrane associated protein which shows aminopeptidase N activity. It is homologous to the human CD13 marker.

Distribution: Isolated Cells: The antigen is present on the majority of isolated dendritic cells of the spleen and lymph node. Over 80% of thioglycollate elicited peritoneal exudate macrophages also express the ER-BMDM1 related antigen. It is absent from freshly isolated bone marrow cells and blood cells. Tissue Sections: Lymphoid organs: macrophages surrounding small blood vessels, interdigitating cells, subpopulation of macrophages in the T-cell areas, capsular and medullary cord macrophages in lymph nodes. Non-lymphoid organs: subpopulation of macrophages (mainly in connective tissues) and dendrocytes, structures positive for aminopeptidase such as the brush border of the small intestine, bile canaliculi in the liver and tubuli and glomeruli in the kidney or type II pneumocytes in the lung. Kupffer cells are negative.

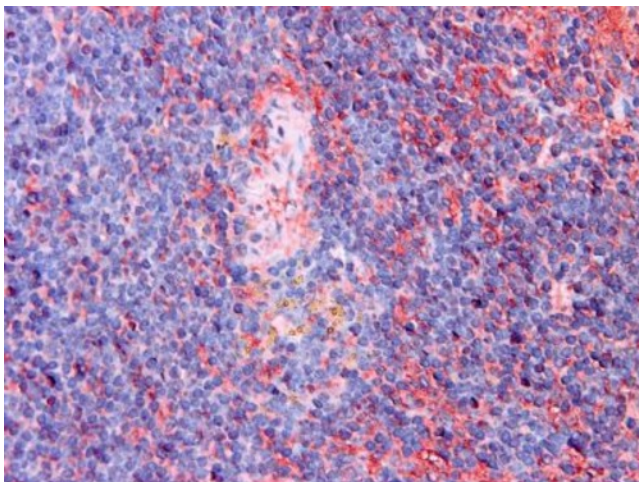
| | |
|--------------|--|
| Formulation: | Affinity purified, lyophilized Reconstitute by adding 0.5ml distilled water. This stock solution contains 0.2mg/ml IgG, phosphate buffered saline pH 7.2 (PBS), 5mg/ml bovine serum albumin (BSA) as a stabilizer and 0.1% Kathon as a preservative. |
|--------------|--|



[View online »](#)

| | |
|-----------------------|--|
| Concentration: | N/A |
| Conjugation: | Unconjugated |
| Storage: | Original vial: 1 year at 4° - 8°C. Stock solution or aliquots thereof: 1 year at -20°C. Avoid repeated thawing and freezing. |
| Gene Name: | alanyl (membrane) aminopeptidase |
| Database Link: | Entrez Gene 16790 Mouse P97449 |
| Background: | Monoclonal antibody ER-BMDM1 is a useful marker for the identification of aminopeptidase N positive macrophages, interdigitating cells and dendritic cells. It is also very suitable for in vitro monitoring of M-CSF stimulated bone marrow cell cultures, as the antigen is gradually expressed with macrophage development. Expression of the ER-BMDM1 antigen rises after the monocytic stage of differentiation: bone marrow cells and peripheral blood monocytes are ER-BMDM1 negative, whereas virtually all thioglycollate elicited peritoneal exudate macrophages bind the antibody. The CD designation is based on similarity in molecular and functional characteristics. |
| Synonyms: | AP-M; AP-N; APN; CD13; GP150; hAPN; LAP1; P150; PEPN |

Product images:



TA363841, Clone ER-BMDM1, mouse spleen, frozen section