

Product datasheet for **TA363840**

Histiocytes Rat Monoclonal Antibody [Clone ID: ER-MP23]

Product data:

Product Type:	Primary Antibodies
Clone Name:	ER-MP23
Applications:	IHC
Recommended Dilution:	Tested for immunohistochemistry (IHC); has been described to work in FACS. Approximate working dilution for IHC: Frozen sections: 1 µg/m (1:200) Paraffin sections: not tested. Optimal dilutions should be determined by the end user. Suggested positive control: Mouse skin.
Reactivity:	Mouse
Host:	Rat
Isotype:	IgG2a
Clonality:	Monoclonal
Immunogen:	Mouse macrophage cell lines.
Specificity:	Mouse: Macrophages of connective tissue Other: unknown

Epitope: The antigen is a glutaraldehyde (0.05%) resistant 38kD single chain surface glycoprotein.

Distribution: Isolated cells: The antigen is found on the surface of connective tissue macrophages and their precursor cells in bone marrow. Macrophage cell lines (J774-1.6, RAW309Cr.1, WR19M.1) corresponding to mature macrophages express high levels of the antigen. Tissue sections: The antigen is abundant on mature macrophages in connective tissues as present in the skin (dermis), salivary glands, capsule of lymph nodes, thymus and various other organs. The antigen is partly coexpressed with the BM8 antigen. ER-MP23 positive macrophages may express Ia antigens.

Formulation:	Affinity purified, lyophilized Reconstitute by adding 0.5ml distilled water. This stock solution contains 0.2mg/ml IgG, phosphate buffered saline pH 7.2 (PBS), 10mg/ml bovine serum albumin (BSA) as a stabilizer and 0.01% thimerosal as a preservative.
Concentration:	N/A
Conjugation:	Unconjugated

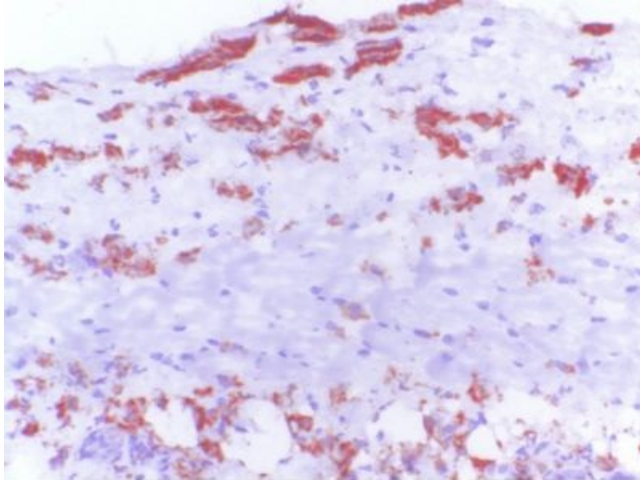


[View online »](#)

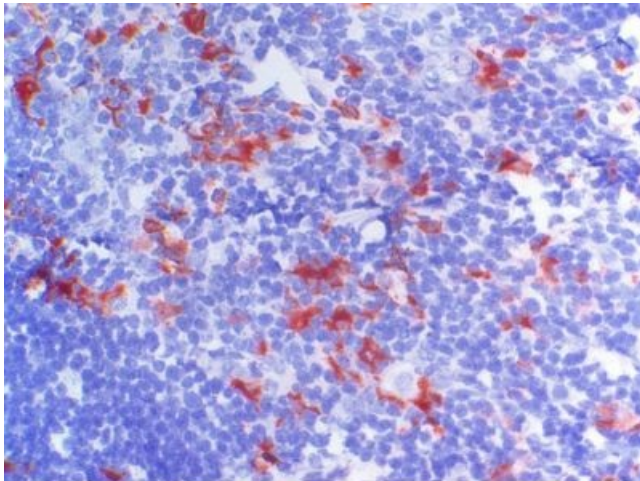
Storage: Original vial: 1 year at 4° - 8°C. Stock solution or aliquots thereof: 1 year at -20°C. Avoid repeated thawing and freezing.

Background: Monoclonal antibody ER-MP23 detects mature macrophages in connective tissues which are situated in the vicinity of epithelia e.g. salivary glands, capsule of lymph nodes, thymus and various other organs. The antibody blocks the mouse macrophage galactose-specific lectin (MMGL).

Product images:



TA363840, Clone ER-MP23, mouse skin, frozen section



TA363840, Clone ER-MP23, mouse thymus, frozen section