

Product datasheet for **TA363837**

CD5 Mouse Monoclonal Antibody [Clone ID: CRIS-1]

Product data:

Product Type:	Primary Antibodies
Clone Name:	CRIS-1
Applications:	IHC
Recommended Dilution:	Tested for immunohistochemistry (IHC); has been described to work in FACS. Approximate working dilution for IHC: Frozen sections: $\leq 0.1 \mu\text{g/ml}$ (1:2000) Paraffin sections: not tested Optimal dilutions should be determined by the end user. Suggested positive control: Human tonsil
Reactivity:	Human
Host:	Mouse
Clonality:	Monoclonal
Immunogen:	Stimulated human leukocytes.
Specificity:	Human: CD5 Other: not tested.

Epitope: The antigen is CD5. The epitope has not been further characterized.

Distribution: Isolated cells: the antibody stains approximately 50-90% of human peripheral blood mononuclear cells in flow cytometry. Tissue sections: the antibody reacts with the interfollicular area and mantle zone in tonsil.

Formulation:	Affinity purified, lyophilized Reconstitute by adding 0.5ml distilled water. This stock solution contains 0.2mg/ml IgG, phosphate buffered saline pH 7.2 (PBS), 5mg/ml bovine serum albumin (BSA), and 0.09% sodium azide as a preservative.
Concentration:	N/A
Conjugation:	Unconjugated
Storage:	Original vial: 1 year at 4° - 8°C. Stock solution or aliquots thereof: 1 year at -20°C. Avoid repeated thawing and freezing.
Gene Name:	CD5 molecule
Database Link:	Entrez Gene 921 Human P06127



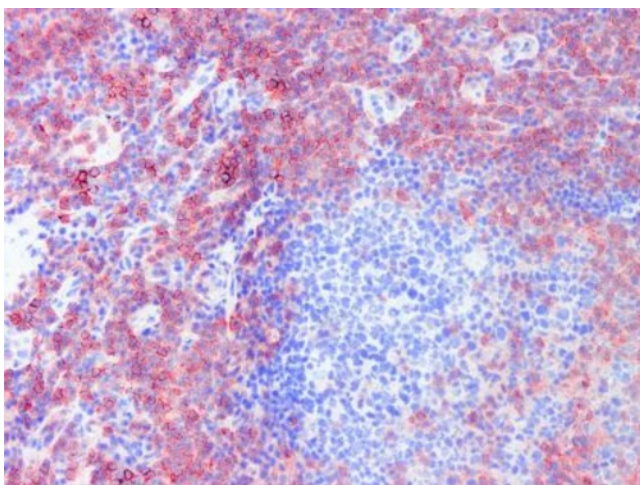
[View online »](#)

Background:

Monoclonal antibody CRIS-1 recognizes the human CD5 antigen. CD5 is expressed at low density early on thymocytes and at high density on all mature T lymphocytes. CD5 is expressed at low density on a small subset of mature B lymphocytes (B1a cells) which is expanded during fetal life and in several autoimmune disorders as well as in some B cell-derived lymphoproliferative disorders (chronic lymphocytic leukemia, CLL). CD5 is a glycoprotein monomer of 67kD which belongs to the scavenger receptor cysteine- rich (SRCR) family of extracellular domain-like structures and possesses a large cytoplasmic domain suitable for signal transduction

Synonyms:

LEU1; T1

Product images:


TA363837, Clone CRIS-1, human tonsil, frozen section