

Product datasheet for **TA363828**

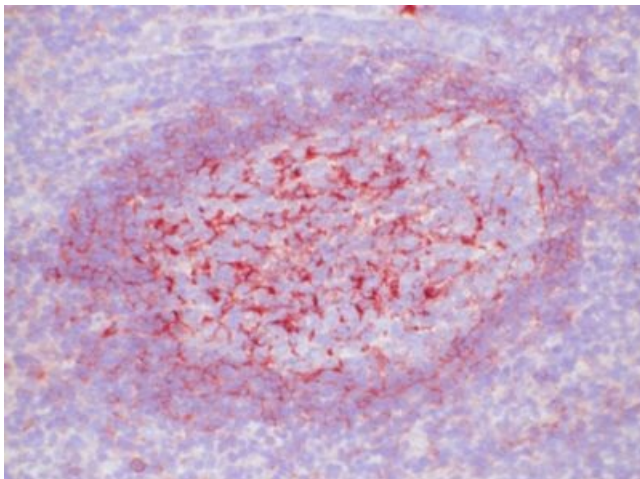
Lambda light chain, mouse anti human, clone λ -1 Biotin

Product data:

Product Type:	Secondary Antibodies
Product Name:	Lambda light chain, mouse anti human, clone λ -1 Biotin
Clone Name:	λ -1 Biotin
Applications:	IHC
Recommended Dilution:	Tested for immunohistochemistry (IHC) Approximate working dilution for IHC: Frozen sections: 0.125 μ g/ml (1:1600) Paraffin sections: Has been described to work with proteinase K pretreatment. Optimal dilutions should be determined by the end user. Suggested positive control: Human tonsil.
Reactivity:	Human
Host:	Mouse
Immunogen:	Purified human IgG.
Isotype:	IgG1
Formulation:	Affinity purified, biotinylated, lyophilized Reconstitute by adding 0.5ml distilled water. This stock solution contains 0.2mg/ml IgG, phosphate buffered saline pH 7.2 (PBS), 5mg/ml bovine serum albumin (BSA) as a stabilizer and 0.05% Kathon CG as a preservative.
Concentration:	N/A
Conjugation:	Biotin
Storage:	Original vial: 1 year at 4° - 8°C. Stock solution: 1 year at -20°C. Avoid repeated thawing and freezing.



[View online »](#)

Product images:

TA363828, Clone lambda-1 Biotin, human tonsil, frozen section