

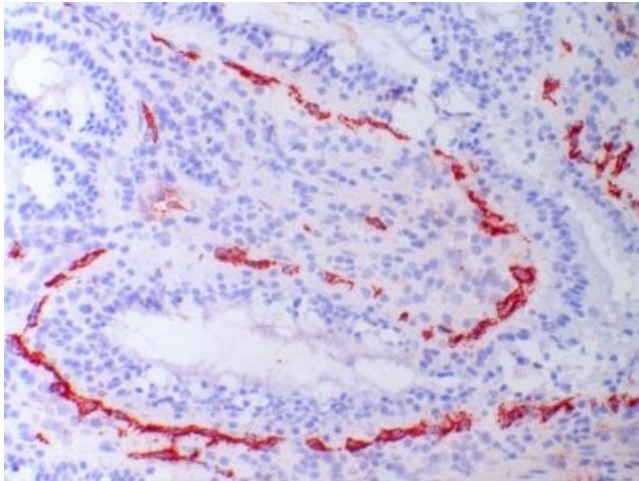
Product datasheet for **TA363826**

Endothelial cells Mouse Monoclonal Antibody [Clone ID: KG 7/30]

Product data:

Product Type:	Primary Antibodies
Clone Name:	KG 7/30
Applications:	IHC
Reactivity:	Human
Host:	Mouse
Isotype:	IgG2a
Clonality:	Monoclonal
Concentration:	N/A
Conjugation:	Unconjugated

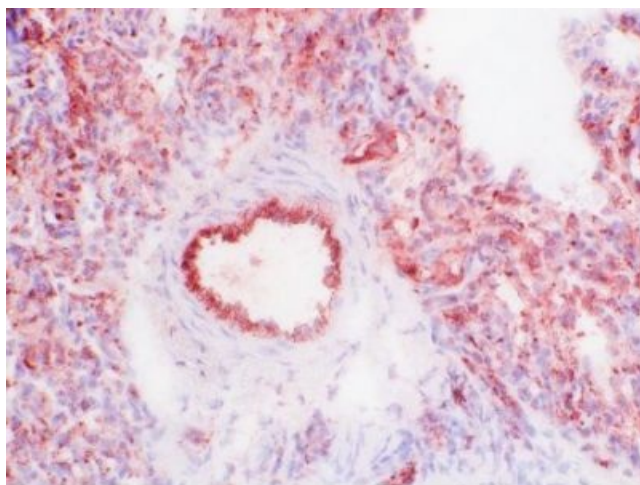
Product images:



TA363826, Clone KG7/30, swine jejunum, frozen section



[View online »](#)



TA363826, Clone KG 7/30, swine lung, frozen section