

Product datasheet for **TA363825**

CD48 Mouse Monoclonal Antibody [Clone ID: MEM-102]

Product data:

Product Type:	Primary Antibodies
Clone Name:	MEM-102
Applications:	IHC
Recommended Dilution:	Tested for immunohistochemistry (IHC); has been described to work in FACS, immunoprecipitation and Western Blots. Approximate working dilution for IHC: Frozen sections: 0.25µg/ml (1:1600) Paraffin sections: does not react on routinely processed pre-treatment. Optimal dilutions should be determined by the end user. Suggested positive control: Human tonsil.
Reactivity:	Human
Host:	Mouse
Isotype:	IgG1
Clonality:	Monoclonal
Immunogen:	Human monocytes.
Specificity:	Epitope: The antigen is CD48; the epitope has not been further characterized.
Formulation:	Diluted ascites, lyophilized Reconstitute by adding 0.5ml distilled water. This stock solution contains 0.4mg/ml IgG, phosphate buffered saline pH 7.2 (PBS), 10mg/ml bovine serum albumin (BSA) as a stabilizer and 0.1% sodium azide as a preservative.
Concentration:	lot specific
Conjugation:	Unconjugated
Storage:	Original vial: 1 year at 4° - 8°C. Stock solution or aliquots thereof: 1 year at -20°C. Avoid repeated thawing and freezing.
Gene Name:	CD48 molecule
Database Link:	Entrez Gene 962 Human P09326



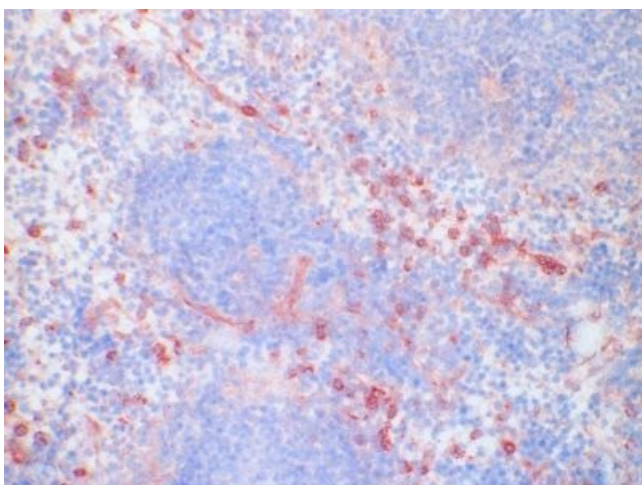
[View online »](#)

Background:

Monoclonal antibody MEM-102 recognizes CD48. CD48 is a 40 - 47kD glycoprotein expressed on all lymphocytes and monocytes, but not on neutrophils or platelets. CD48 consists of two extracellular Ig-like domains (non-disulfide bonded V-like and a truncated C2- like domain) linked to the cell membrane via a glycosyl phosphatidylinositol (GPI) anchor. CD48 belongs to the CD2 subset of the Ig superfamily. CD48 has been shown to bind to CD2, albeit with very low affinity.

Synonyms:

BCM1; BLAST; BLAST1; hCD48; mCD48; MEM-102; SLAMF2; TCT.1

Product images:

TA363825, Clone MEM-102, human tonsil, frozen section