

## Product datasheet for **TA363822**

### CEBP Alpha (CEBPA) Rabbit Polyclonal Antibody

#### Product data:

Product Type:	Primary Antibodies
Applications:	WB
Reactivity:	Human
Host:	Rabbit
Clonality:	Polyclonal
Immunogen:	The immunogen is a synthetic peptide directed towards the N terminal region of human CEBPA
Specificity:	<b>Expected reactivity:</b> Cow, Guinea Pig, Human, Mouse, Pig, Rat <b>Homology:</b> Cow: 100%; Guinea Pig: 90%; Human: 100%; Mouse: 100%; Pig: 100%; Rat: 100%
Formulation:	Liquid. Purified antibody supplied in 1x PBS buffer with 0.09% (w/v) sodium azide and 2% sucrose. <i>Note that this product is shipped as lyophilized powder to China customers.</i>
Concentration:	lot specific
Purification:	Affinity Purified
Conjugation:	Unconjugated
Storage:	For short term use, store at 2-8°C up to 1 week. For long term storage, store at -20°C in small aliquots to prevent freeze-thaw cycles.
Stability:	Shelf life: one year from despatch.
Predicted Protein Size:	38kDa
Gene Name:	CCAAT/enhancer binding protein alpha
Database Link:	<a href="#">NP_004355</a> <a href="#">Entrez Gene 1050 Human</a> <a href="#">P49715</a>



[View online »](#)

**Background:**

CEBPA is a bZIP transcription factor which can bind as a homodimer to certain promoters and enhancers. It can also form heterodimers with the related proteins CEBP-beta and CEBP-gamma. It has been shown to bind to the promoter and modulate the expression of the gene encoding leptin, a protein that plays an important role in body weight homeostasis. Also, CEBPA can interact with CDK2 and CDK4, thereby inhibiting these kinases and causing growth arrest in cultured cells.

**Synonyms:**

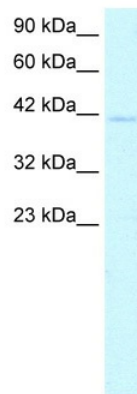
C/EBP-alpha; CEBP

**Protein Families:**

Druggable Genome, ES Cell Differentiation/IPS

**Protein Pathways:**

Acute myeloid leukemia, Pathways in cancer

**Product images:**

WB Suggested Anti-CEBPA Antibody Titration: 0.2-1 ug/ml  
Positive Control: HepG2 cell lysate CEBPA is supported by BioGPS gene expression data to be expressed in HepG2