

Product datasheet for **TA363817**

Ionotropic Glutamate receptor 2 (GRIA2) Rabbit Polyclonal Antibody

Product data:

Product Type:	Primary Antibodies
Applications:	IHC
Reactivity:	Mouse
Host:	Rabbit
Clonality:	Polyclonal
Immunogen:	The immunogen is a synthetic peptide directed towards the N terminal region of human GRIA2
Specificity:	Expected reactivity: Cow, Guinea Pig, Horse, Human, Mouse, Rabbit, Rat, Zebrafish Homology: Cow: 100%; Guinea Pig: 100%; Horse: 100%; Human: 100%; Mouse: 100%; Rabbit: 100%; Rat: 100%; Zebrafish: 92%
Formulation:	Liquid. Purified antibody supplied in 1x PBS buffer with 0.09% (w/v) sodium azide and 2% sucrose. <i>Note that this product is shipped as lyophilized powder to China customers.</i>
Concentration:	lot specific
Purification:	Protein A purified
Conjugation:	Unconjugated
Storage:	For short term use, store at 2-8°C up to 1 week. For long term storage, store at -20°C in small aliquots to prevent freeze-thaw cycles.
Stability:	Shelf life: one year from despatch.
Predicted Protein Size:	99kDa
Gene Name:	glutamate ionotropic receptor AMPA type subunit 2
Database Link:	NP_000817 Entrez Gene 14800 Mouse P42262
Background:	Receptor for glutamate. L-glutamate acts as an excitatory neurotransmitter at many synapses in the central nervous system. The postsynaptic actions of GLU are mediated by a variety of receptors that are named according to their selective agonists. This receptor binds AMPA (quisqualate) > glutamate > kainate.



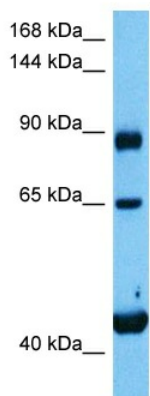
[View online »](#)

Synonyms: GluA2; gluR-B; GluR-K2; GLUR2; GluR2; GLURB; HBGR2

Protein Families: Druggable Genome, Ion Channels: Glutamate Receptors, Transmembrane

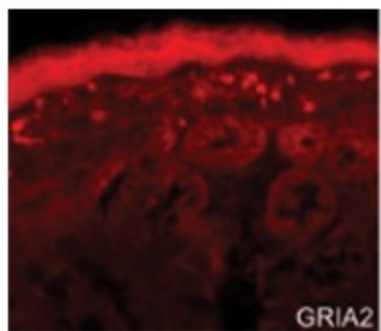
Protein Pathways: Amyotrophic lateral sclerosis (ALS), Long-term depression, Long-term potentiation, Neuroactive ligand-receptor interaction

Product images:



Host: Rabbit
 Target Name: Gria2
 Sample Type: Mouse Liver Lysate
 Antibody Dilution: 1.0µg/ml

Host: Mouse
 Target Name: GRIA2
 Sample Tissue: Mouse Liver
 Antibody Dilution: 1 ug/ml



Sample Type: Mouse Gut TissuePrimary
 Dilution: 20ug/mL and 4ug/mLSecondary (Goat Anti-Rabbit Cy3)
 Dilution: 1:1500