

## Product datasheet for **TA363813**

### Ionotropic Glutamate receptor 2 (GRIA2) Rabbit Polyclonal Antibody

#### Product data:

Product Type:	Primary Antibodies
Applications:	IHC, WB
Reactivity:	Human, Mouse
Host:	Rabbit
Clonality:	Polyclonal
Immunogen:	The immunogen is a synthetic peptide directed towards the N terminal region of human GRIA2
Specificity:	<b>Expected reactivity:</b> Cow, Guinea Pig, Horse, Human, Mouse, Rabbit, Rat, Zebrafish <b>Homology:</b> Cow: 100%; Guinea Pig: 100%; Horse: 100%; Human: 100%; Mouse: 100%; Rabbit: 100%; Rat: 100%; Zebrafish: 92%
Formulation:	Liquid. Purified antibody supplied in 1x PBS buffer with 0.09% (w/v) sodium azide and 2% sucrose. <i>Note that this product is shipped as lyophilized powder to China customers.</i>
Concentration:	lot specific
Purification:	Protein A purified
Conjugation:	Unconjugated
Storage:	For short term use, store at 2-8°C up to 1 week. For long term storage, store at -20°C in small aliquots to prevent freeze-thaw cycles.
Stability:	Shelf life: one year from despatch.
Predicted Protein Size:	99kDa
Gene Name:	glutamate ionotropic receptor AMPA type subunit 2
Database Link:	<a href="#">NP_000817</a> <a href="#">Entrez Gene 14800 Mouse</a> <a href="#">Entrez Gene 2891 Human</a> <a href="#">P42262</a>
Background:	GRIA2 is one of the glutamate receptors, which are the predominant excitatory neurotransmitter receptors in the mammalian brain and are activated in a variety of normal neurophysiologic processes. These receptors are heteromeric protein complexes with mul
Synonyms:	GluA2; glur-B; GluR-K2; GLUR2; GluR2; GLURB; HBGR2

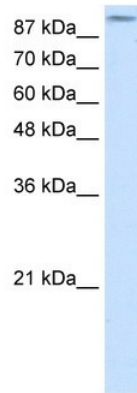


[View online »](#)

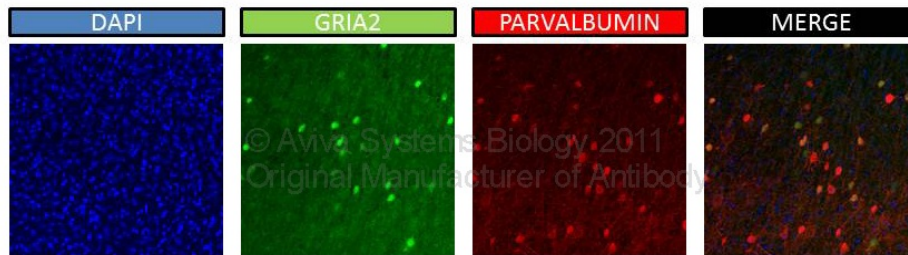
**Protein Families:** Druggable Genome, Ion Channels: Glutamate Receptors, Transmembrane

**Protein Pathways:** Amyotrophic lateral sclerosis (ALS), Long-term depression, Long-term potentiation, Neuroactive ligand-receptor interaction

**Product images:**

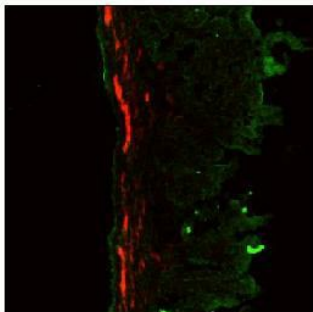


WB Suggested Anti-GRIA2 Antibody Titration:  
 2.5ug/ml  
 ELISA Titer: 1:1562500  
 Positive Control: HepG2 cell lysate



**Primary Antibodies** Brain slices were incubated overnight in a solution of PBST (0.2%) + 10% Normal GOAT serum + a monoclonal mouse anti-Parvalbumin antibody (1:2000)+ rabbit anti-GRIA2 (Aviva systems Biology, 1ug/mL)and gently shaken overnight at 4 C. **Secondary Antibodies** Samples were washed 6x in PBS (10 min each at RT) and exposed to the following secondary antibodies o/n at 4 C: PBST (0.3%) + 10% normal goat serum + anti-mouse Alexa 488 (1:1000) + Anti-rabbit Alexa 555 (1:1000) for two hours. Samples were washed 6x in PBST mounted. Images acquired with a confocal microscope at 63X.

GRIA2 antibody



Green: GRIA2 antibody  
Red: Neural crest cells

Application: Immunohistochemistry  
Species+tissue/cell type: Mouse Gut Tissue  
TgWnt1-Cre/+ Ednrbflex3/+  
Rosa26YFPStop/YFPStop  
How many ug's of tissue/cell lysate run on the gel:  
11 m Mouse Gut Tissue  
Primary antibody dilution: 1:50  
Secondary antibody: Goat anti-rabbit-cy3  
Secondary antibody dilution: 1:1500

See IHC 2 Data and Customer Feedback for more information