

Product datasheet for **TA363812**

APPD (PLEKHF1) Rabbit Polyclonal Antibody

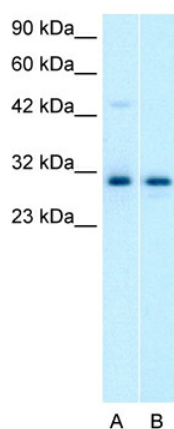
Product data:

Product Type:	Primary Antibodies
Applications:	WB
Reactivity:	Human
Host:	Rabbit
Clonality:	Polyclonal
Immunogen:	The immunogen is a synthetic peptide directed towards the C terminal region of human APPD
Specificity:	Expected reactivity: Cow, Dog, Human, Mouse, Rat, Yeast Homology: Cow: 92%; Dog: 92%; Human: 100%; Mouse: 92%; Rat: 92%; Yeast: 100%
Formulation:	Liquid. Purified antibody supplied in 1x PBS buffer with 0.09% (w/v) sodium azide and 2% sucrose.
Concentration:	lot specific
Purification:	Protein A purified
Conjugation:	Unconjugated
Storage:	For short term use, store at 2-8°C up to 1 week. For long term storage, store at -20°C in small aliquots to prevent freeze-thaw cycles.
Stability:	Shelf life: one year from despatch.
Predicted Protein Size:	31kDa
Gene Name:	pleckstrin homology and FYVE domain containing 1
Database Link:	NP_077286 Entrez Gene 79156 Human Q96K11
Background:	APPD (Apoptosis-inducing protein D; phafin 1) is predicted through gene annotation and contains pleckstrin homology domain. It may binds to two Zn ⁺⁺ ions through its FYVE zinc finger domain. Biological function of this protein has not been clearly mapped yet.
Synonyms:	APPD; LAPF; MGC4090; Phafin-1; PHAFIN1; ZFYVE15



[View online »](#)

Product images:



Rabbit Anti- APPD Antibody
Catalog Number: AVARP 09055
Lot Number: QC0444
Lane: A. Jurkat Cell Lysate
B. HepG2 Cell Lysate

Antibody Titration: 1.0µg/ml
Gel Concentration: 12%

Host: Rabbit
Target Name: APPD
Sample Tissue: Human Jurkat Whole cell
Antibody Dilution: 1 ug/ml